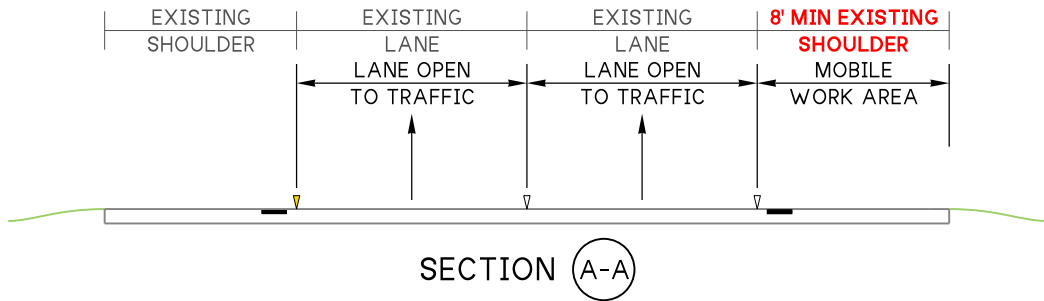
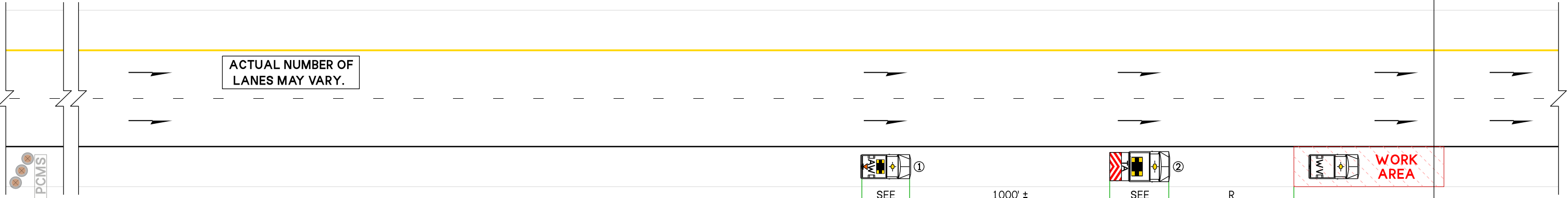


-HQ\Traffic\HQ_Traffic_Connect\HQ Work Zone\Typical TCPs\TC100s\projectstore.wsdot.wa.gov:WSDOT\



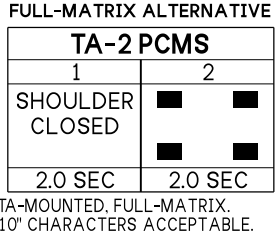
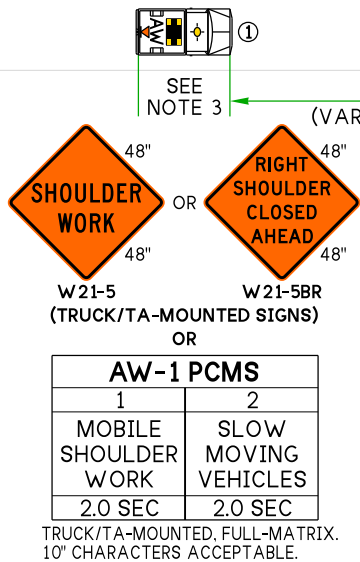
MOBILE TRANSPORTABLE ATTENUATOR ROLL AHEAD DISTANCE = R			
HOST VEHICLE WEIGHT LESS THAN 22,000 lbs.		HOST VEHICLE WEIGHT 22,000 lbs. OR MORE	
45-55 MPH	60+ MPH	45-55 MPH	60+ MPH
172'	222'	150'	172'



(OPTIONAL)

PCMS or mPCMS	
1	2
MOBILE SHOULDER CLOSURE	OVER NEXT # MILES
2.0 SEC	2.0 SEC

FIELD LOCATION 1± MILE PRIOR TO MOBILE LANE CLOSURE LIMITS PER STD. SPEC. 2-04.3(6)C.



NOTES:

- IF RIGHT SHOULDER IS LESS THAN 8' WIDE AT WORK AREA OR ENCROACHMENT INTO OPEN LANES NECESSARY, USE A MOBILE SINGLE RIGHT LANE CLOSURE.
- ALL ARROW BOARDS ARE IN FLASHING 4-DOT CAUTION MODE. FULL-MATRIX PCMS MAY BE USED AS AN ALTERNATIVE TO TRUCK-MOUNTED SIGNS & ARROW BOARDS.
- AW-1: ADVANCE WARNING VEHICLE MAY ALSO BE A TRANSPORTABLE ATTENUATOR. MAINTAIN 8 TO 10 SECONDS OF VISIBILITY TO APPROACHING TRAFFIC WHEN FEASIBLE. AVOID PARTIAL LANE ENCROACHMENT. SIGN MOUNTED ON BACK OF VEHICLE SHALL NOT OBSTRUCT 4-DOT FLASHING DISPLAY.
- 1000' ± DISTANCE MAY VARY TO ACCOMMODATE INTERMITTENT NARROW SHOULDER AREAS, INTERCHANGE RAMPs, OR HORIZONTAL/VERTICAL CURVES.
- TA-2: TRANSPORTABLE ATTENUATOR REQUIRED.

- MOBILE SHOULDER CLOSURE NEAR INTERCHANGE RAMPs NEED ADDITIONAL CONSIDERATIONS. TA_s AND WORK VEHICLES MAY CROSS OPEN RAMPs WHEN TRAFFIC IS CLEAR AND SAFE TO DO SO.
- RED/WHITE OR BLACK/YELLOW CHEVRON PATTERN OK ON TRANSPORTABLE ATTENUATOR CRASH CUSHION. ADDITIONAL TA_s MAY BE ADDED.
- SIGNS ARE BLACK ON ORANGE UNLESS OTHERWISE INDICATED.
- PLAN IS APPLICABLE TO MOBILE SHOULDER CLOSURES WHEN WORKERS ARE MOSTLY IN VEHICLES (ONLY BRIEFLY ON FOOT) WITH WORK OPERATIONS OCCURRING OVER SEVERAL MILES. MOBILE SHOULDER CLOSURES SHALL NOT BE USED FOR CATCH BASIN CLEANING, LUMINAIRE LIGHT REPLACEMENTS, OR SIMILAR WORK OPERATIONS AS DETERMINED BY THE ENGINEER.

- (SEE NOTE 10B)
- (SEE NOTE 10A) 12" 18" 5" 2D 2D 2D
- R9-501 (B/W)
- W20-2A
- (SEE NOTE 10B) 24" 24" 24"
- R5-601 (B/W)
- (SEE NOTE 10B/C) 24" 24" 24"
- R5-6 (R/B/W)
10. BICYCLIST ACCOMMODATIONS, WHERE FACILITY OPEN TO BICYCLES:
(A) ADD R9-501 SIGN MOUNTED TO REAR OF AW-1 & TA-2 TO PROHIBIT PASSING. WHEN AND WHERE FEASIBLE, LIMIT BICYCLIST DELAYS TO 5 MINUTES.
(B) BICYCLES PROHIBITED VIA W20-2A, R5-601 & R5-6 SIGNS. PROVIDE SIGNED DETOUR/ALTERNATIVE ROUTE AROUND LIMITS OF MOBILE SHOULDER CLOSURE.
(C) BICYCLES PROHIBITED VIA R5-6 SIGN(S). PROVIDE FREE SHUTTLE (WORK TRUCK, VAN, OR BUS OK) + CONTACT INFORMATION/PHONE BOX/LABORER.
(D) ENGINEER TO ACCEPT ANY ALTERNATIVE STRATEGIES.

FREEWAY (2+ LANES): MOBILE RIGHT SHOULDER CLOSURE, EXCLUDING PAVEMENT MARKING OPERATIONS

(MAINTAIN EXISTING SPEED LIMIT)

NOT TO SCALE

FILE NAME					189_1_FwyMobileRtShldr.dgn		REGION NO.	STATE	FED. AID PROJ. NO.	 PRELIMINARY PLAN									PLAN REF NO	
TIME		10:24:16 AM				10	WASH		TC189											
DATE		21-JUL-2025				JOB NUMBER														
PLOTTED BY		LintzF				CONTRACT NO.		LOCATION NO.												
DESIGNED BY																				
ENTERED BY																		SHEET		
CHECKED BY																		1		
PROJ. ENGR.																		OF		
REGIONAL ADM.																		1		
REVISION																		SHEETS		
DATE																				
BY																				