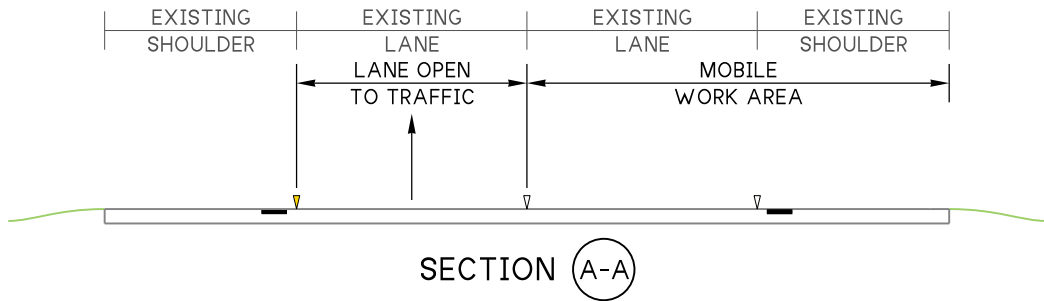
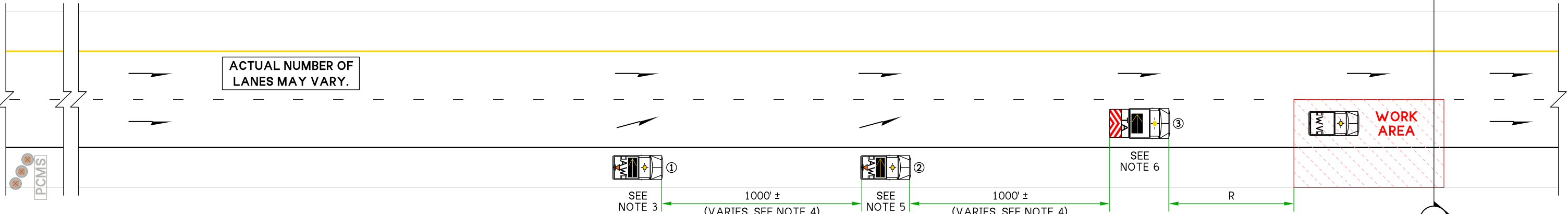


-HQ\Traffic\HQ_Traffic_Connect\HQ Work Zone\Typical TCPs\TC100s\projectstore.wsdot.wa.gov:WSDOT\



MOBILE TRANSPORTABLE ATTENUATOR ROLL AHEAD DISTANCE = R			
HOST VEHICLE WEIGHT LESS THAN 22,000 lbs.		HOST VEHICLE WEIGHT 22,000 lbs. OR MORE	
45-55 MPH	60+ MPH	45-55 MPH	60+ MPH
172'	222'	150'	172'



(OPTIONAL)

PCMS or mPCMS	
1	2
MOBILE RT LANE CLOSURE	OVER NEXT # MILES
2.0 SEC	2.0 SEC

FIELD LOCATION 1+ MILE PRIOR
TO MOBILE LANE CLOSURE LIMITS
PER STD. SPEC. 2-04.3(6)C.

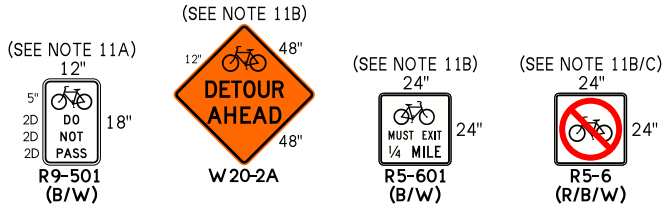
LEGEND:	
	TRUCK/TA-MOUNTED SIGNS (SEE NOTE 2)
	TRAFFIC SAFETY DRUMS
	TRUCK-MOUNTED ARROW DISPLAY (SEE NOTE 2)
	ADVANCED WARNING VEHICLE
	WORK VEHICLE
	TRANSPORTABLE ATTENUATOR (TL-3)
	PCMS/mPCMS

NOTES:

- IF ENCROACHMENT INTO OPEN LANES NECESSARY (EXCEPT FOR PAVEMENT MARKING OPERATIONS), USE A MOBILE DOUBLE RIGHT LANE CLOSURE ON FREEWAYS WITH 3 OR MORE LANES.
- ALL ARROW BOARDS ARE IN FLASHING ARROW MODE. FULL-MATRIX PCMS MAY BE USED AS AN ALTERNATIVE TO TRUCK-MOUNTED SIGNS & ARROW BOARDS.
- AW-1: ADVANCE WARNING VEHICLE MAY ALSO BE A TRANSPORTABLE ATTENUATOR. MAINTAIN 8 TO 10 SECONDS OF VISIBILITY TO APPROACHING TRAFFIC WHEN FEASIBLE. AVOID PARTIAL LANE ENCROACHMENT. SIGN MOUNTED ON BACK OF VEHICLE SHALL NOT OBSTRUCT ARROW BOARD.
- 1000' ± DISTANCE MAY VARY TO ACCOMMODATE INTERMITTENT NARROW SHOULDER AREAS, INTERCHANGE RAMPS, OR HORIZONTAL/VERTICAL CURVES.

- AW-2: ADVANCE WARNING VEHICLE MAY ALSO BE A TRANSPORTABLE ATTENUATOR. MAINTAIN 8 TO 10 SECONDS OF VISIBILITY TO APPROACHING TRAFFIC WHEN FEASIBLE. AVOID PARTIAL LANE ENCROACHMENT. SIGN MOUNTED ON BACK OF VEHICLE SHALL NOT OBSTRUCT ARROW BOARD.
- TA-3: TRANSPORTABLE ATTENUATOR REQUIRED.
- LEFT EXIT-RAMPS/ON-RAMPS UNAFFECTED. TEMPORARILY BLOCK RIGHT ON-RAMP LANE(S) PRIOR TO PAVED GORE WHILE WORK VEHICLE PASSES ON-RAMP UNTIL TA-3 PASSES THE ON-RAMP MERGE AREA THEN REOPEN.
- RED/WHITE OR BLACK/YELLOW CHEVRON PATTERN OK ON TRANSPORTABLE ATTENUATOR CRASH CUSHION. ADDITIONAL TAs MAY BE ADDED.
- SIGNS ARE BLACK ON ORANGE UNLESS OTHERWISE INDICATED.

10. PLAN IS APPLICABLE WHEN WORKERS ARE MOSTLY IN VEHICLES (ONLY BRIEFLY ON FOOT) WITH WORK OCCURRING OVER SEVERAL MILES AND SHALL NOT BE USED FOR CATCH BASIN CLEANING, LUMINAIRE LIGHT REPLACEMENTS, OR SIMILAR WORK AS DETERMINED BY THE ENGINEER.

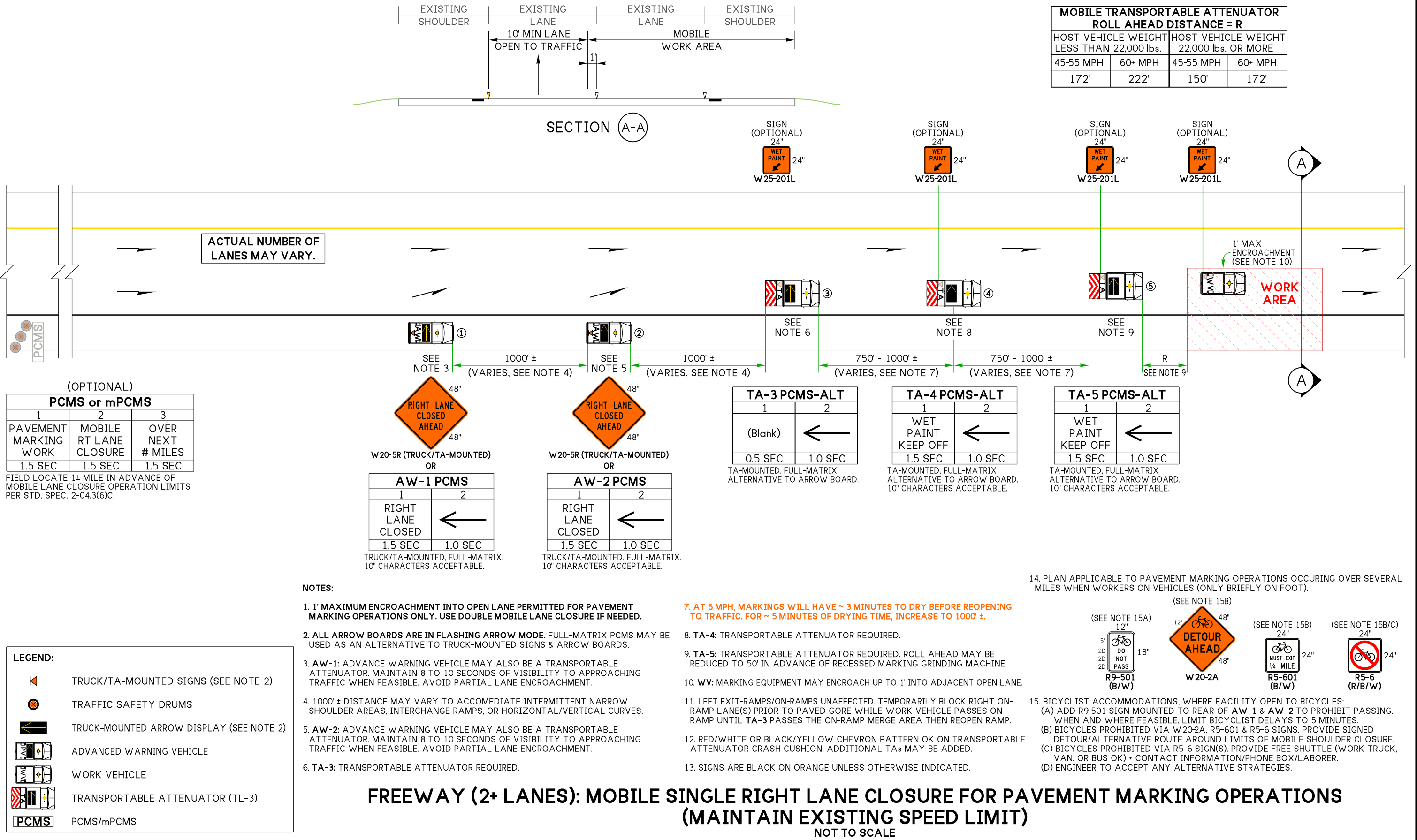


- BICYCLIST ACCOMMODATIONS, WHERE FACILITY OPEN TO BICYCLES:
(A) ADD R9-501 SIGN MOUNTED TO REAR OF AW-1 & AW-2 TO PROHIBIT PASSING. WHEN AND WHERE FEASIBLE, LIMIT BICYCLIST DELAYS TO 5 MINUTES.
(B) BICYCLES PROHIBITED VIA W20-2A, R5-601 & R5-6 SIGNS. PROVIDE SIGNED DETOUR/ALTERNATIVE ROUTE AROUND LIMITS OF MOBILE LANE CLOSURE.
(C) BICYCLES PROHIBITED VIA R5-6 SIGN(S). PROVIDE FREE SHUTTLE (WORK TRUCK, VAN, OR BUS OK) + CONTACT INFORMATION/PHONE BOX/LABORER.
(D) ENGINEER TO ACCEPT ANY ALTERNATIVE STRATEGIES.

FREEWAY (2+ LANES): MOBILE SINGLE RIGHT LANE CLOSURE, EXCLUDING PAVEMENT MARKING OPERATIONS (MAINTAIN EXISTING SPEED LIMIT) NOT TO SCALE

FILE NAME 194_1_FwyMobile1RtLane.dgn					REGION NO.	STATE	FED. AID PROJ. NO.	 PRELIMINARY PLAN				SEE CERTIFICATION SHEET DATE	SEE CERTIFICATION SHEET DATE	TYPICAL TRAFFIC CONTROL PLANS	PLAN REF NO	
TIME 10:49:22 AM				10	WASH		TC194									
DATE 21-JUL-2025				JOB NUMBER												
PLOTTED BY LintzF				CONTRACT NO.												
DESIGNED BY				LOCATION NO.												
ENTERED BY																
CHECKED BY															SHEET 1 OF 2 SHEETS	
PROJ. ENGR.																
REGIONAL ADM.		REVISION		DATE	BY											

-HQ\Traffic\HQ_Traffic_Connect\HQ Work Zone\Typical TCPs\TC100s\projectstore.wsdot.wa.gov:WSDOT\



FILE NAME 194_2_FwyMobile1RtLanePM.dgn					REGION NO.	STATE	FED. AID PROJ. NO.	 PRELIMINARY PLAN					PLAN REF NO TC194
TIME 10:49:21 AM				10	WASH								
DATE 21-JUL-2025				JOB NUMBER									
PLOTTED BY LintzF													
DESIGNED BY						CONTRACT NO.	LOCATION NO.					SHEET 2 OF 2 SHEETS	
ENTERED BY													
CHECKED BY													
PROJ. ENGR.													
REGIONAL ADM.		REVISION	DATE	BY									TYPICAL TRAFFIC CONTROL PLANS
									SEE CERTIFICATION SHEET DATE	SEE CERTIFICATION SHEET DATE			
							STAMP BOX		STAMP BOX				