

Portage Bay Bridge and Roanoke Lid Project

May 2025 Construction Meeting

May 15, 2025

Please note that this meeting is being recorded.

Welcome

Facilitator

- Allan Vann, Skanska Public Information Manager

Presenters

- Robin Clarke, Skanska Community Liaison

Other staff

- Carmelo Chavez, Skanska Construction Manager

Meeting information

Please note that this meeting is being recorded.

Time: Noon to 1 p.m.

Q&A: Please submit your questions via the Q&A chat box at the bottom of your screen.

Contact us: Want to ask us a question after the meeting ends? Send us an email at sr520bridge@wsdot.wa.gov.

Want to share this meeting with others?
Next week, visit the Construction Corner at sr520construction.com to view a recording of the meeting and download a copy of today's presentation.

Stay up to date
Get weekly updates about current and upcoming construction activities straight to your inbox.



SR 520 Montlake Project information

A representative from Graham is attending this meeting and available to answer questions during the Q&A portion of the meeting.

What you need to know

- The SR 520 Montlake Project is nearing completion.
- This project is located directly east of the SR 520 Portage Bay Bridge and Roanoke Lid Project.
- Still have questions? Email the team at sr520bridge@wsdot.wa.gov

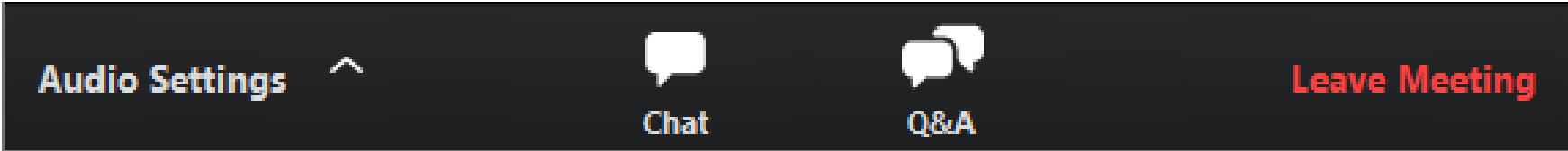


View of the completed Montlake Lid from above.

How to participate in this webinar

All attendees are muted. To adjust your audio settings during the meeting, click on **Audio Settings**.

Please use the **Q&A window** to ask questions or offer comments.



CHAT is disabled during the presentation. Please communicate with the team through the **Q&A window**.

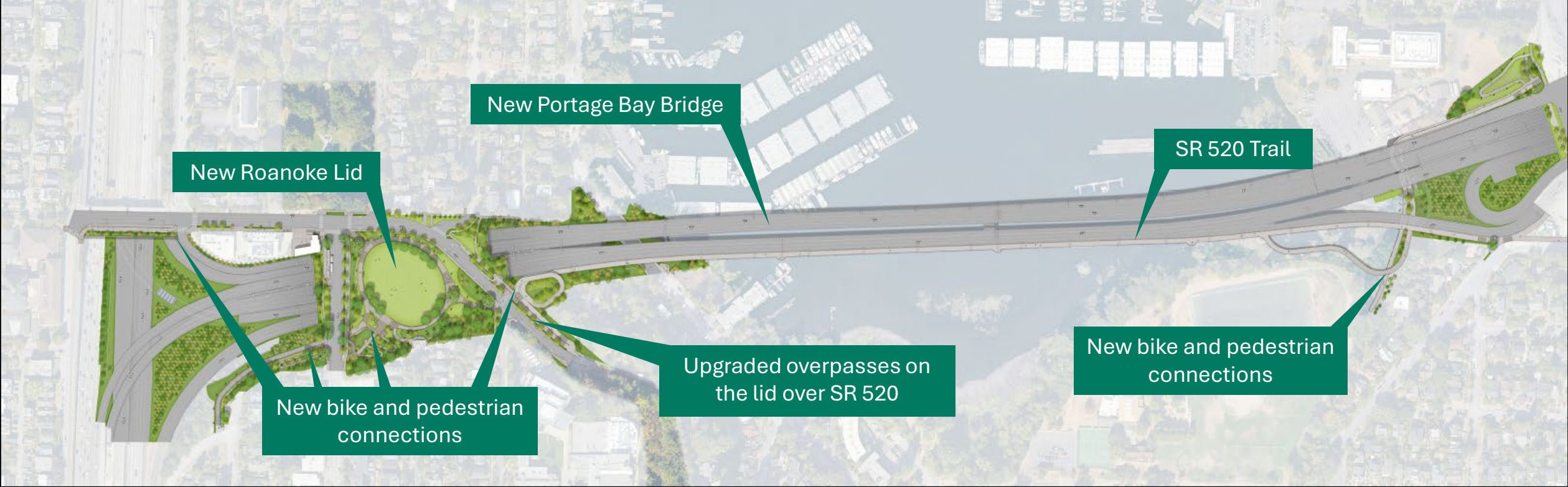
Agenda

- Project schedule
- Piledriving updates
- Current construction activities
- Bill Dawson Trail closure
- Long-term lookahead (2025)
- How to stay informed
- Q&A session



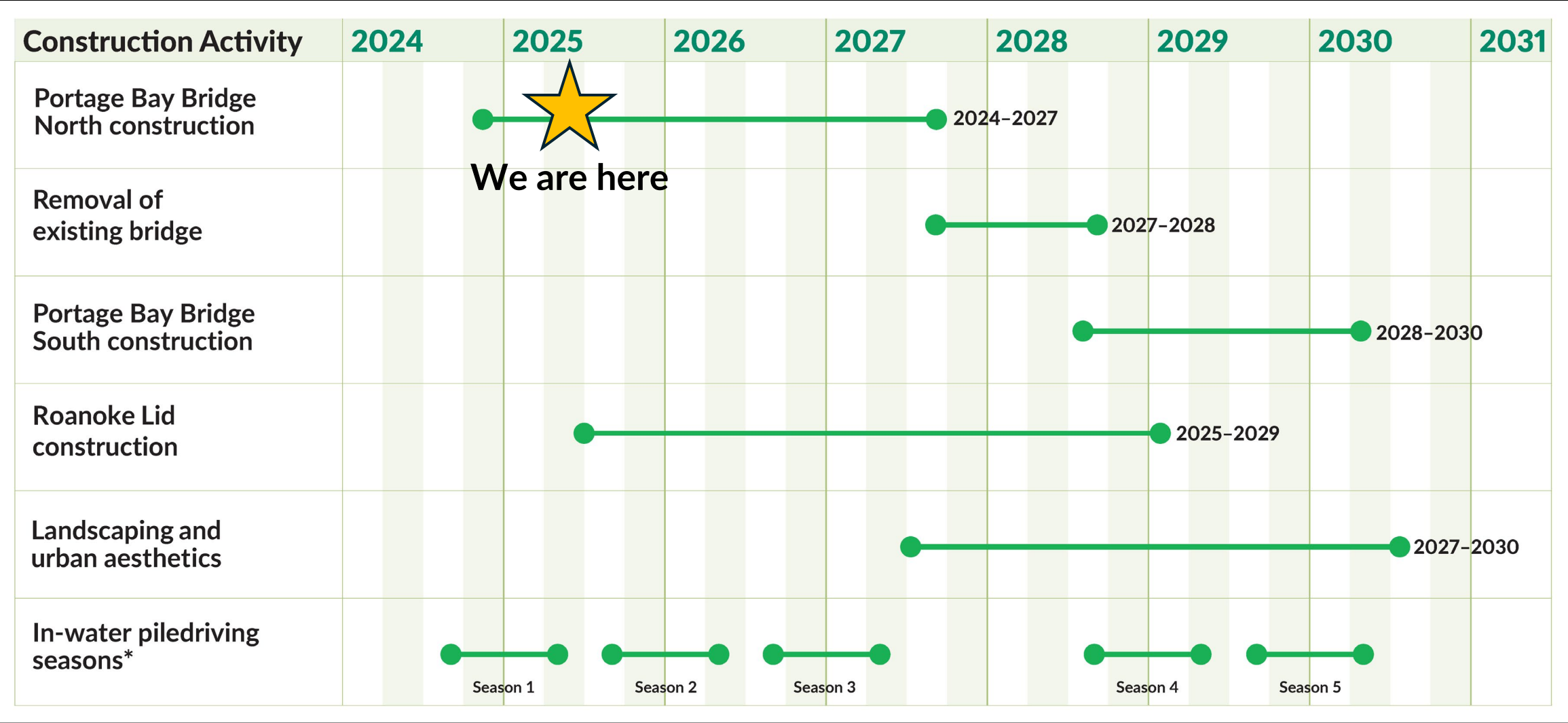
Aerial image of Portage Bay Bridge construction.

Project benefits



Map of major project elements.

Project schedule



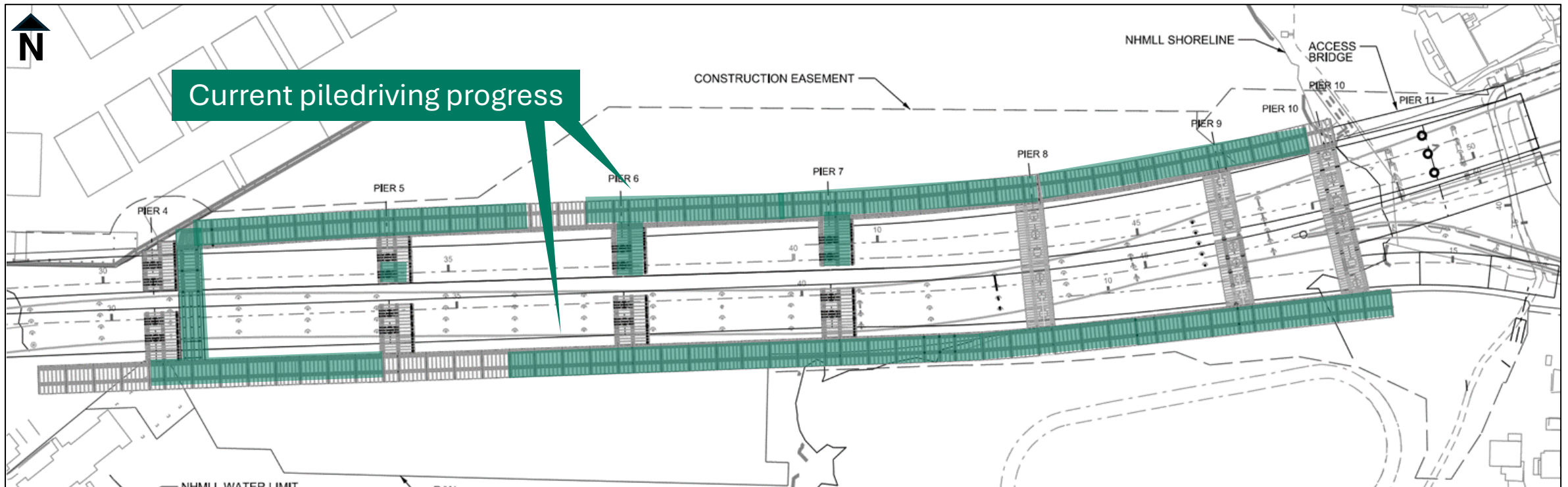
★
We are here

*In-water impact piledriving will occur in seasons annually from September through April. Impact piledriving on land and piledriving with a vibratory hammer will occur year-round.

Piledriving updates

Season 1 piledriving update (May 2025)

- In-water impact piledriving is complete for the season.
- Crews installed over 300 piles in the green sections below, over half of the total piles for the project.
- Some on-land impact piledriving is scheduled for May through September.
- Vibratory piledriving will occur year-round.



Map showing current piledriving progress.

Piledriving lookahead: May through August

Piledriving lookahead - May through August

- In May, crews will install 17 piles on land in the Montlake area using both vibratory and impact hammers.
- As a reminder, we will continue working in the water this summer using vibratory hammers.
- Starting as soon as September 1, we will resume in-water impact piledriving as part of our Season 2 work.



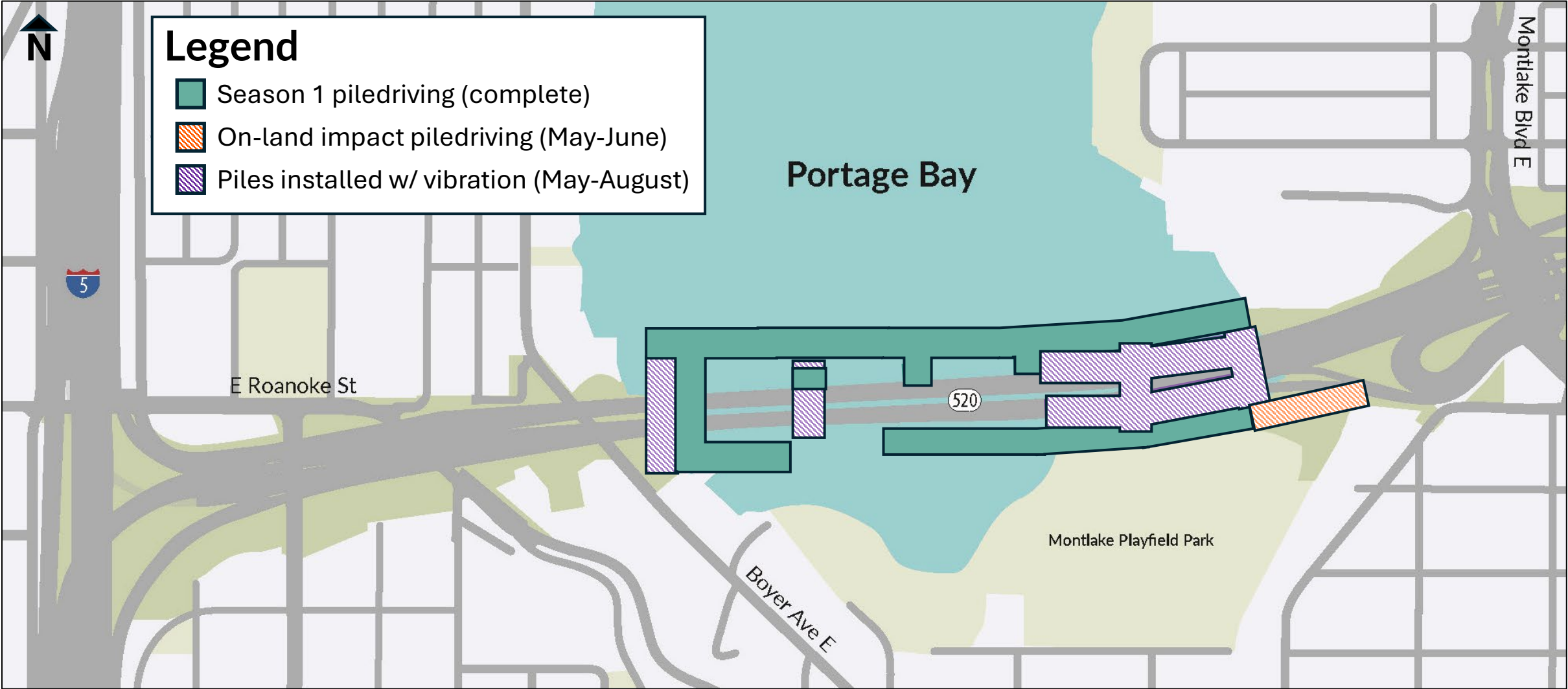
Crews installing piles near Portage Bay.

Questions about noise and vibration

If you have any questions about noise or vibration during construction, please call our 24/7 hotline. We can investigate your concerns in real-time upon receiving your call.

24/7 hotline number: 206-319-4520

Piledriving lookahead - May through August



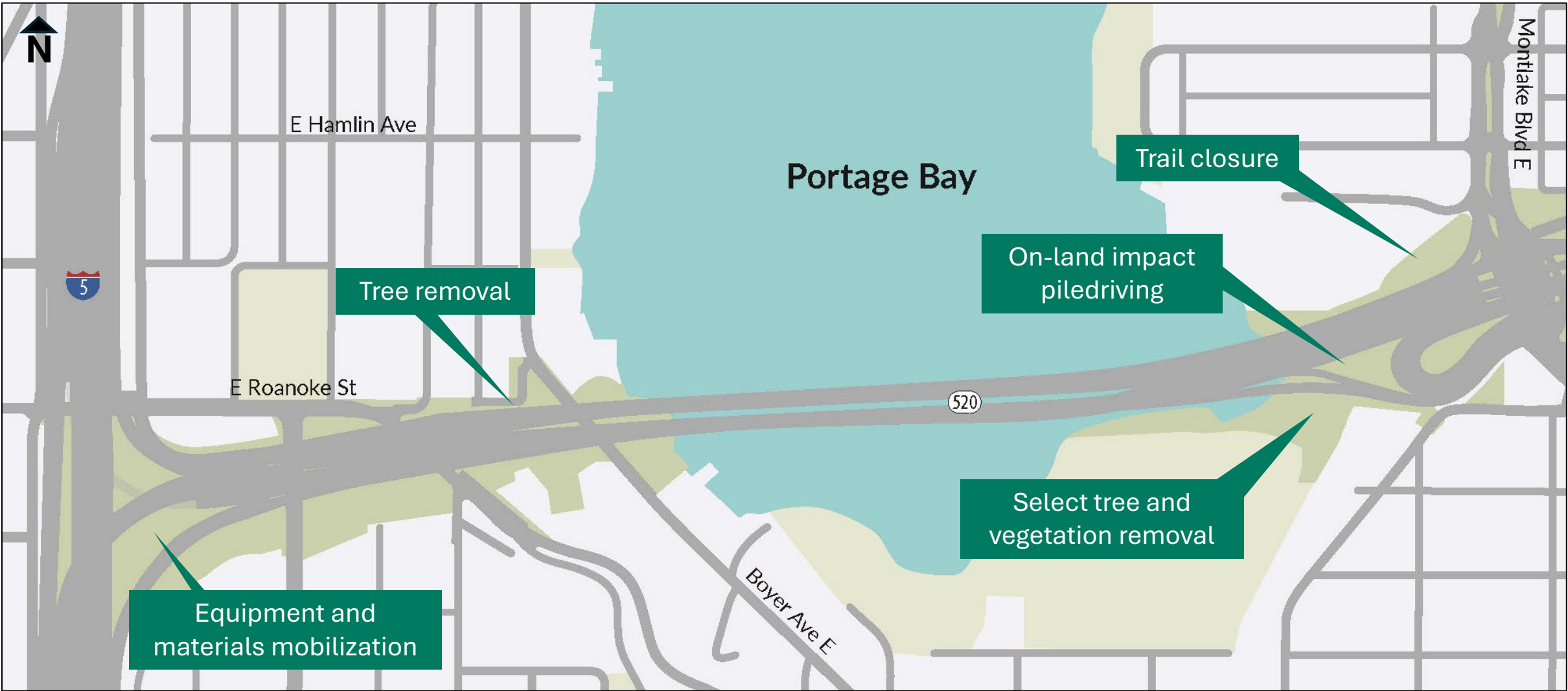
Map of current construction activities.

Impact vs. vibratory piling

	Impact piling	Vibratory piling
Description	<ul style="list-style-type: none"> A hammer hits the top of the pile Sharp sound into the air, water, and soil 	<ul style="list-style-type: none"> The pile is vibrated into the sediment rather than hammered Continuous sound
In-water schedule	Sept. 1 through April 30	Year-round
On-land schedule	Year-round	Year-round

Current construction activities

Current construction activities



Map of current construction activities.

Summer construction hours

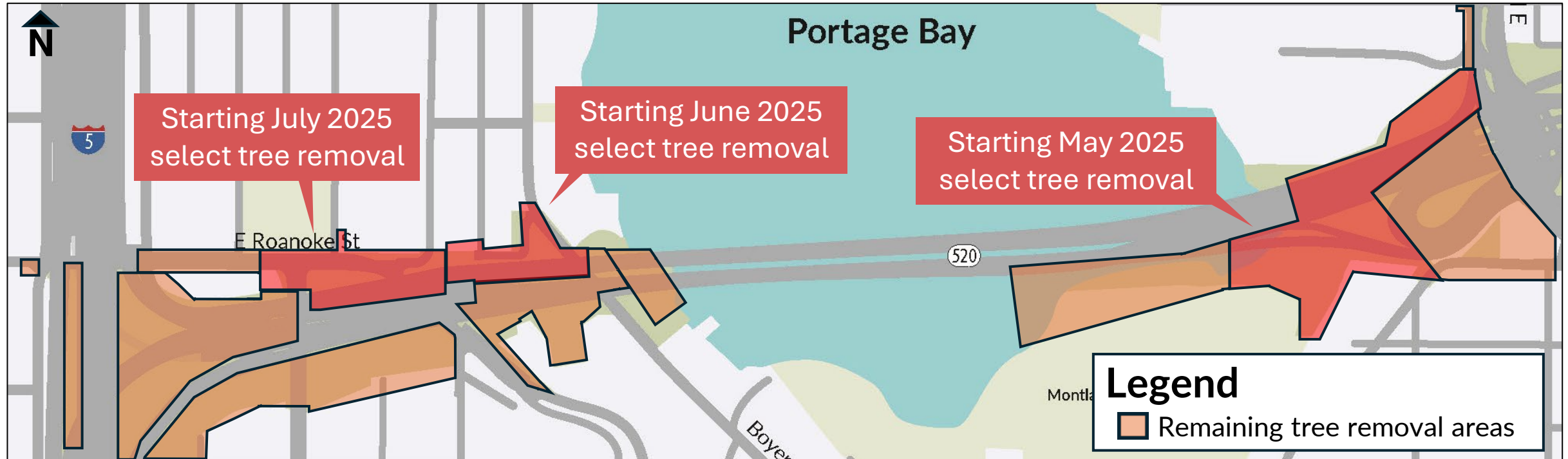
- Crews are scheduled to maintain normal work hours during the summer:
 - Weekdays: 7 a.m. to 10 p.m.
 - Some weekends: 9 a.m. to 10 p.m.
- There may be some occasional overnight work.



Crews installing piling in Portage Bay during the day.

Tree removal schedule

- Throughout the spring and summer, crews are removing select trees and vegetation in the areas highlighted below in red.
- Get schedule updates through email and signs in your neighborhood.

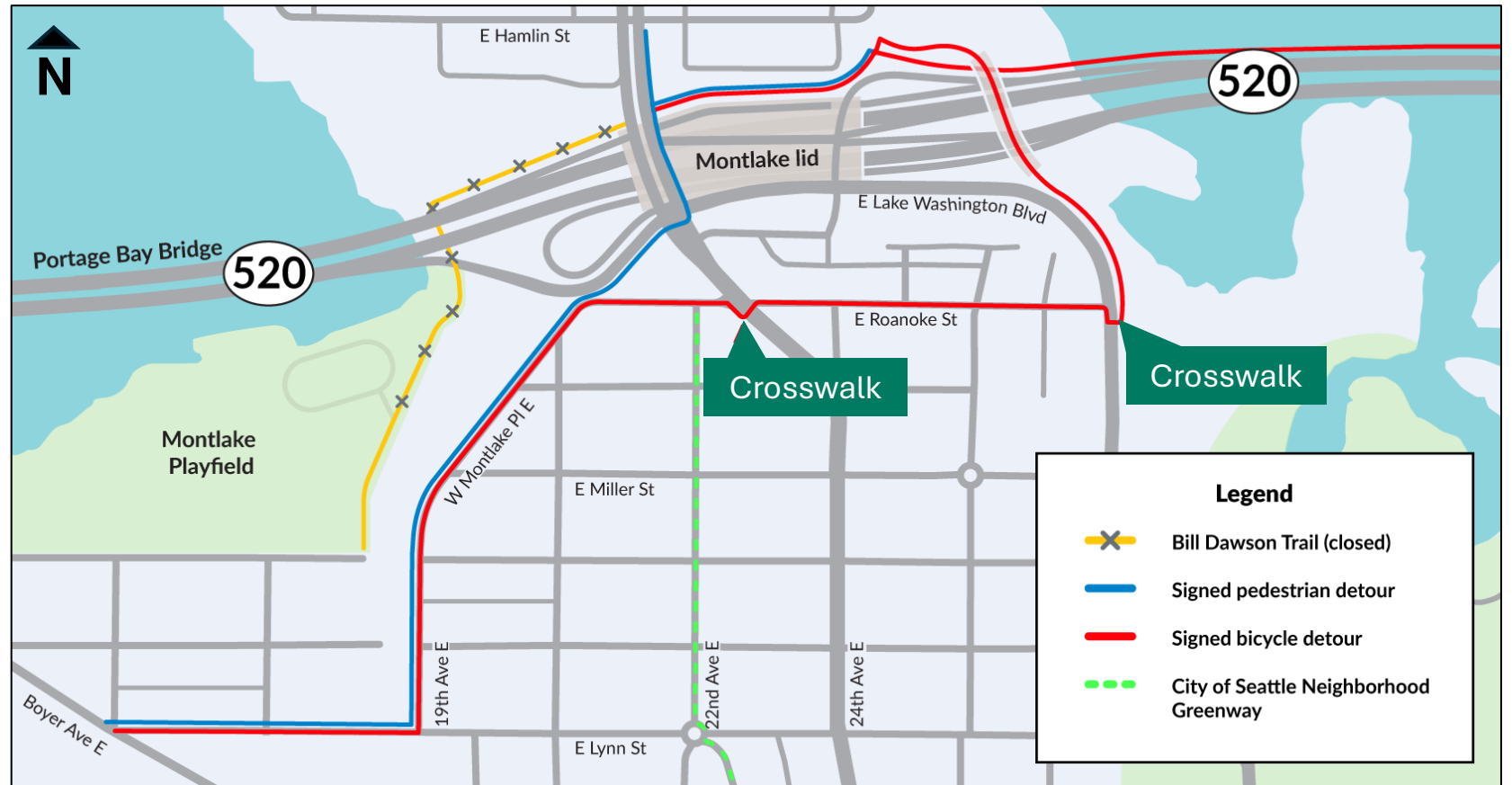


We will remove trees and vegetation in stages.

Bill Dawson Trail closure

Long-term Bill Dawson Trail closure

- On Monday, May 12, we closed the Bill Dawson Trail between Montlake Boulevard and the Montlake Playfield.
- The trail will remain closed for **five years**.

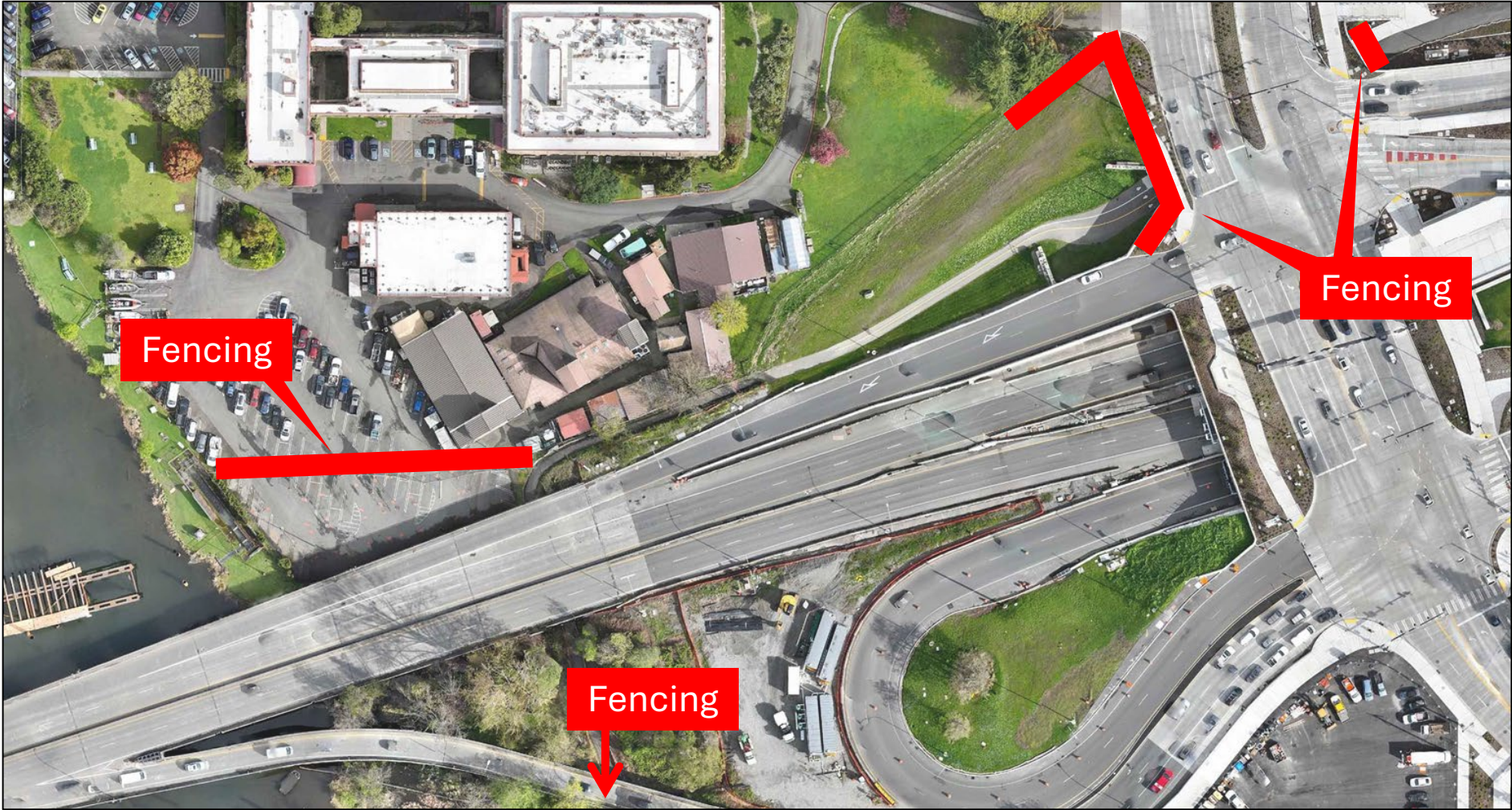


A detour map for the trail closure.

Crossing Montlake Boulevard

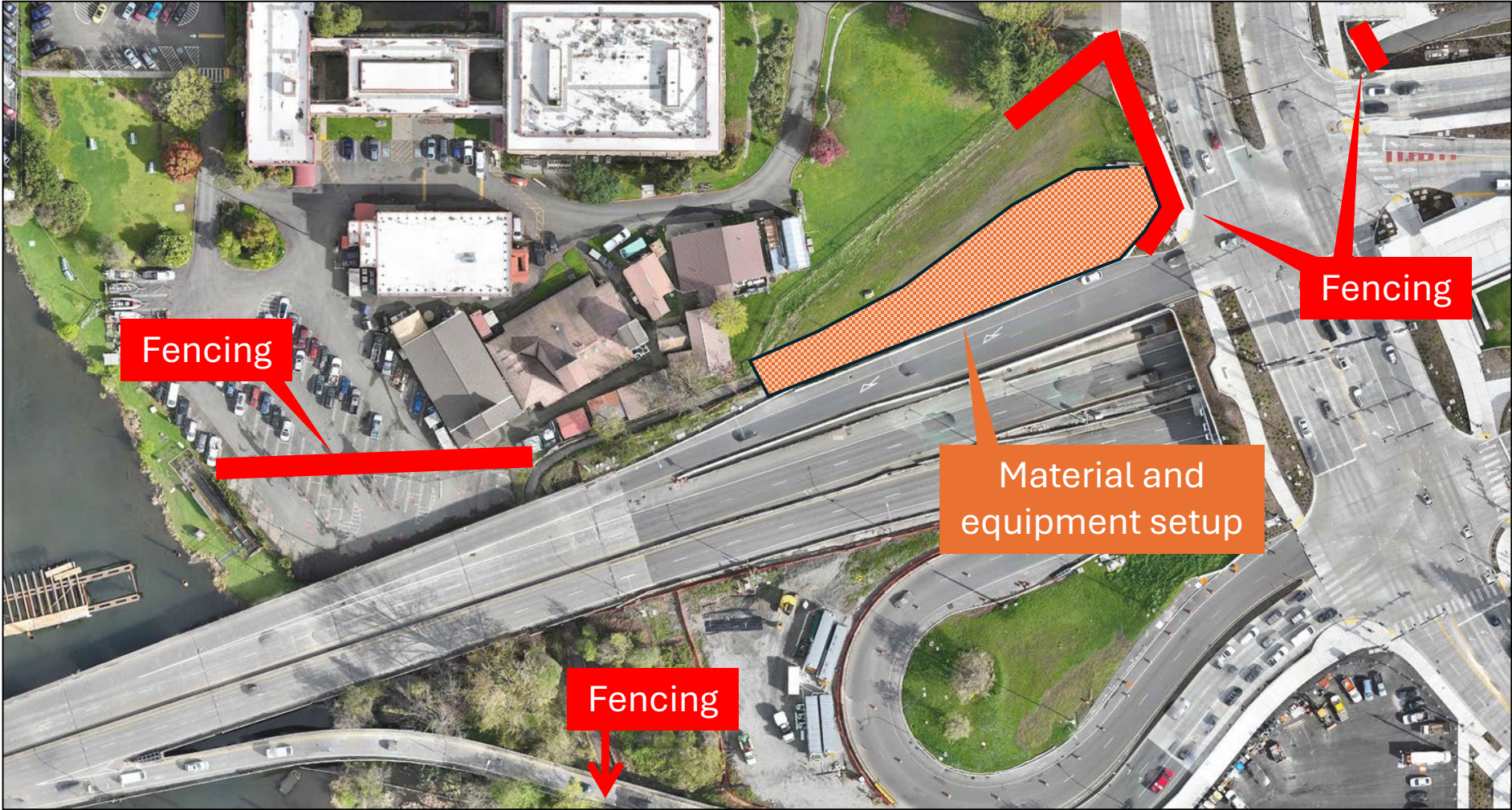
Bicyclists are encouraged to use the crosswalk when crossing the Montlake Boulevard/East Roanoke Street intersection. We encourage all travelers to take the routes they are most comfortable with.

Bill Dawson Trail work area – Stage 1



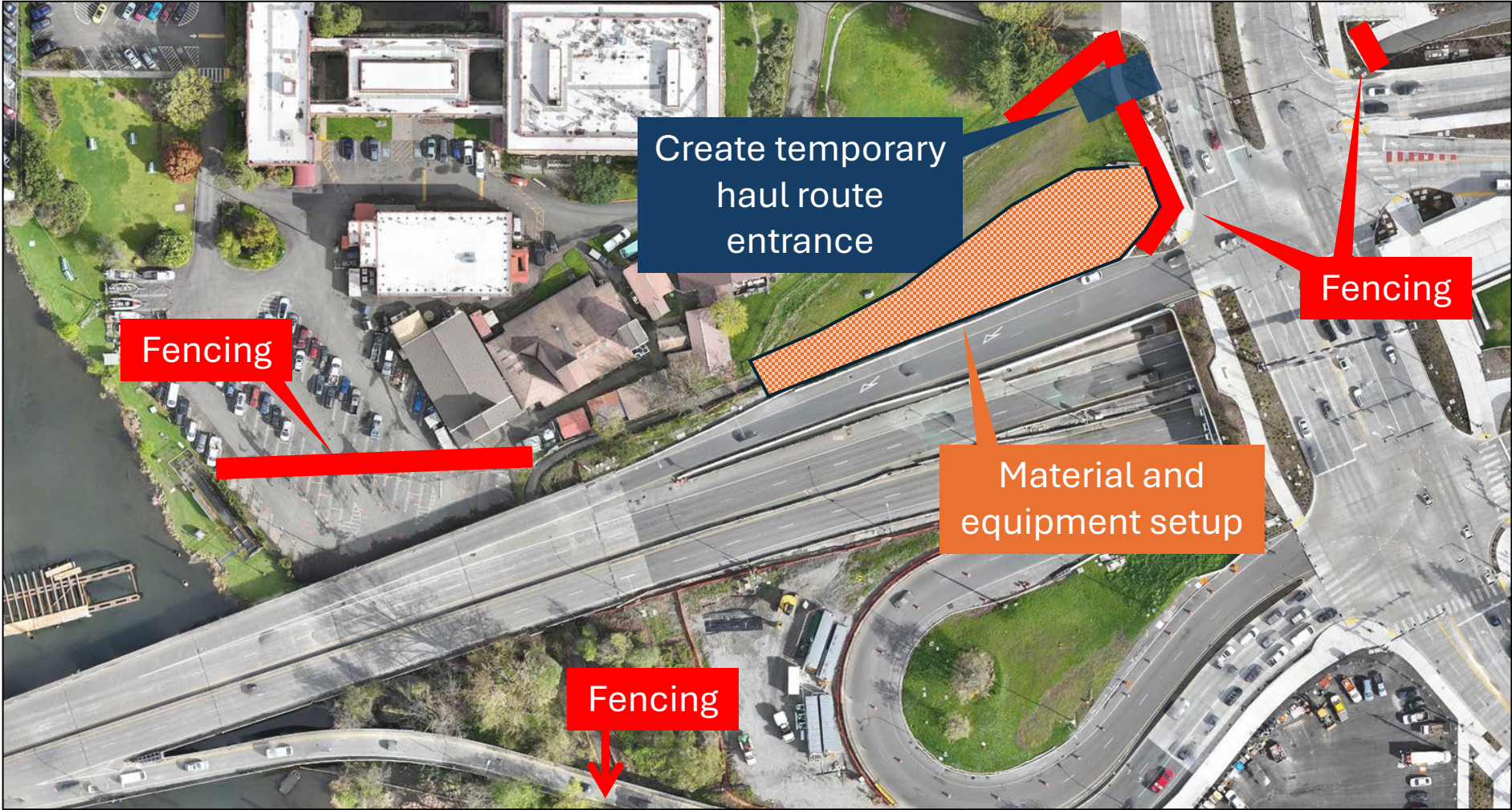
A map of work activities around the Bill Dawson Trail and NOAA property.

Bill Dawson Trail work area – Stage 1



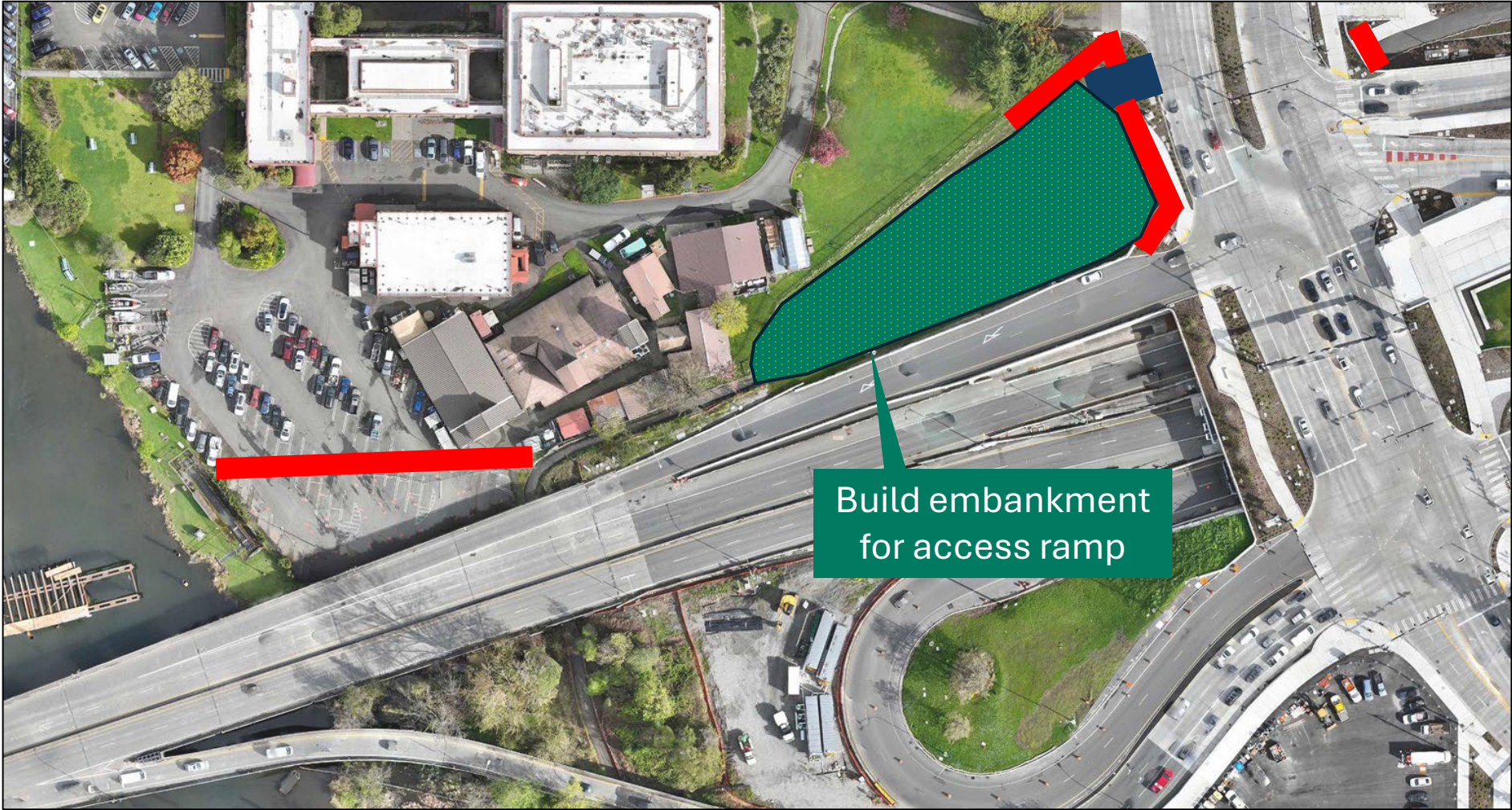
A map of work activities around the Bill Dawson Trail and NOAA property.

Bill Dawson Trail work area – Stage 1



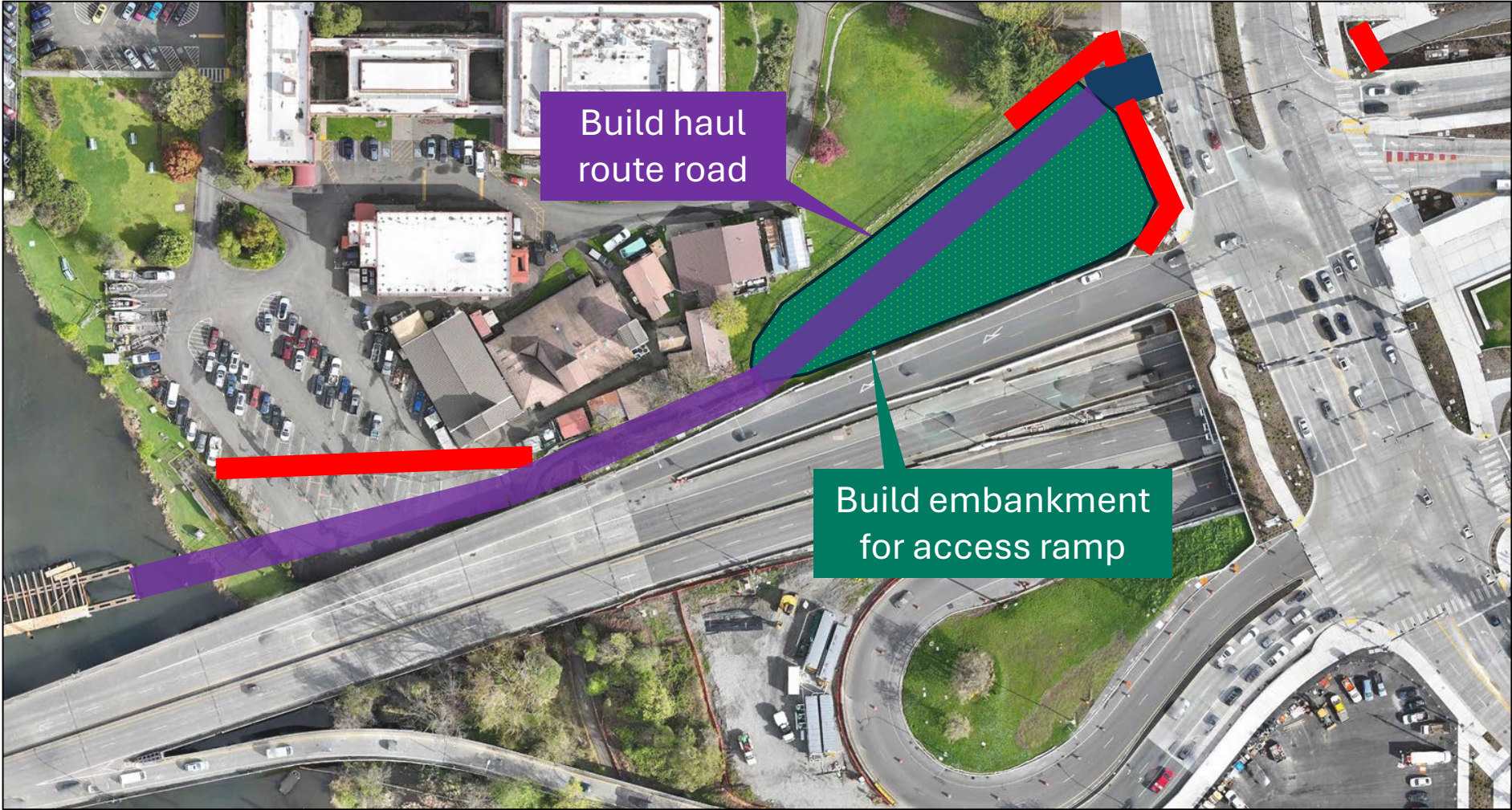
A map of work activities around the Bill Dawson Trail and NOAA property.

Bill Dawson Trail work area – Stage 2



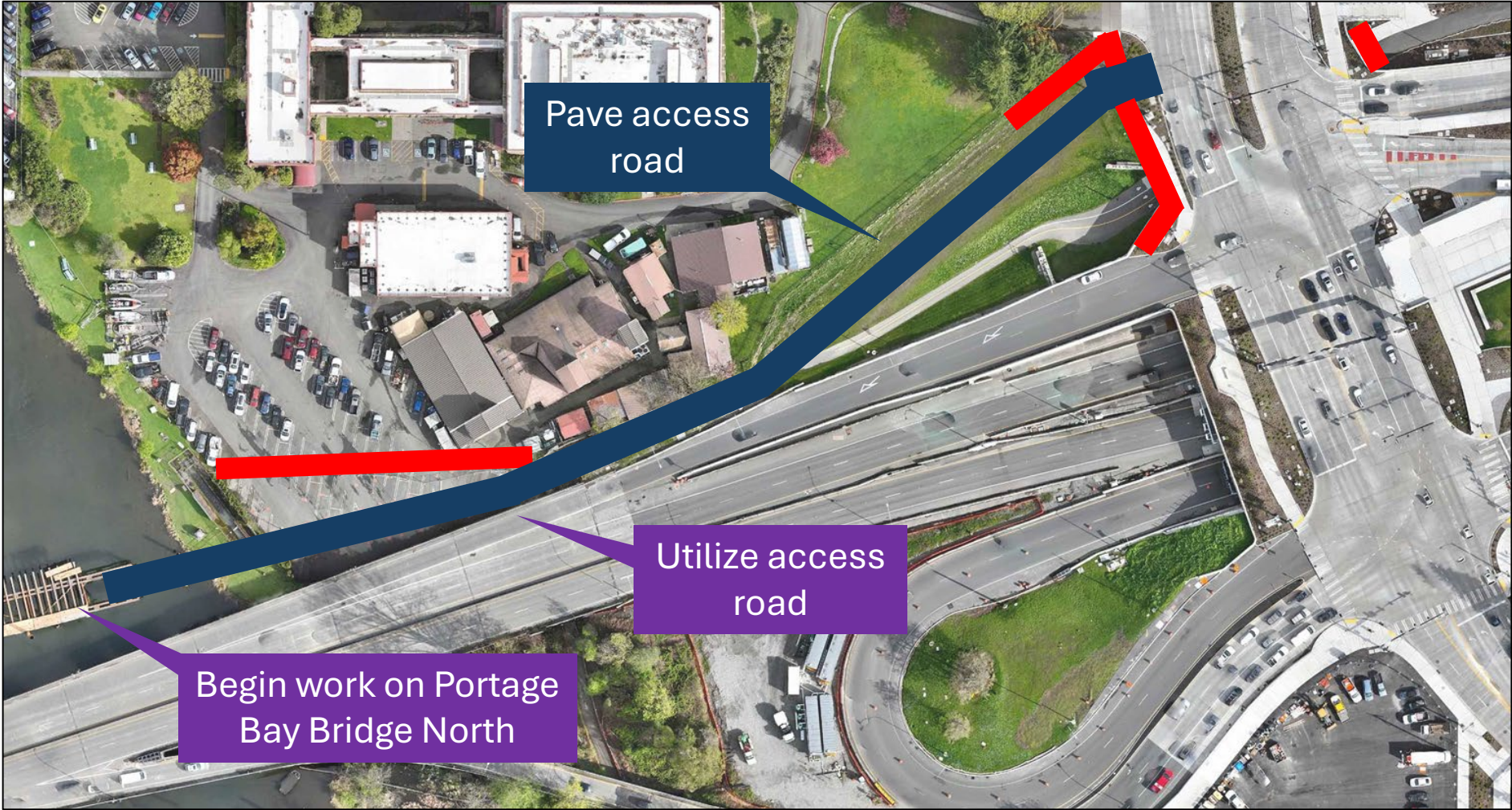
A map of work activities around the Bill Dawson Trail and NOAA property.

Bill Dawson Trail work area – Stage 2



A map of work activities around the Bill Dawson Trail and NOAA property.

Bill Dawson Trail work area – Stage 3



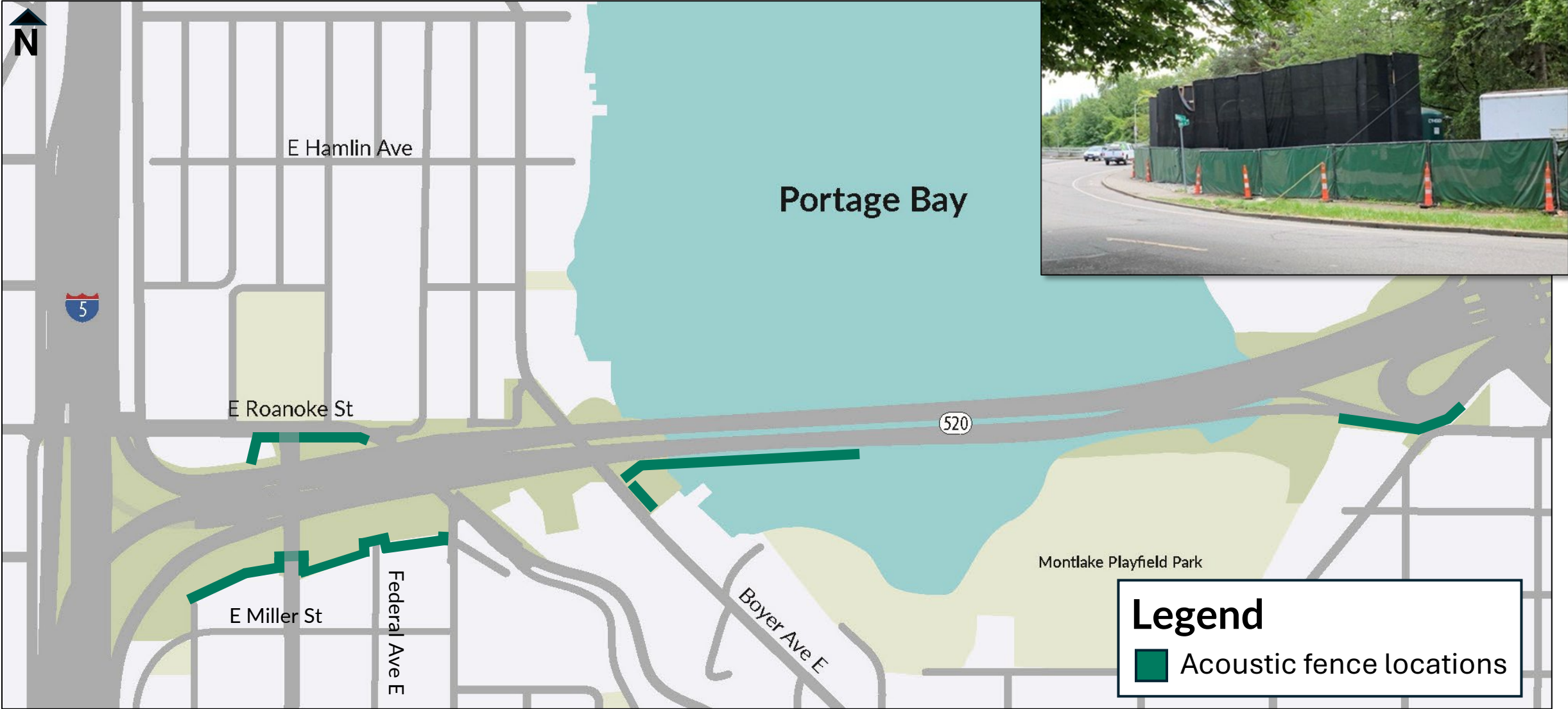
A map of work activities around the Bill Dawson Trail and NOAA property.

Bill Dawson Trail area improvements



Conceptual renderings only. Design is subject to change.

Acoustic fence installation

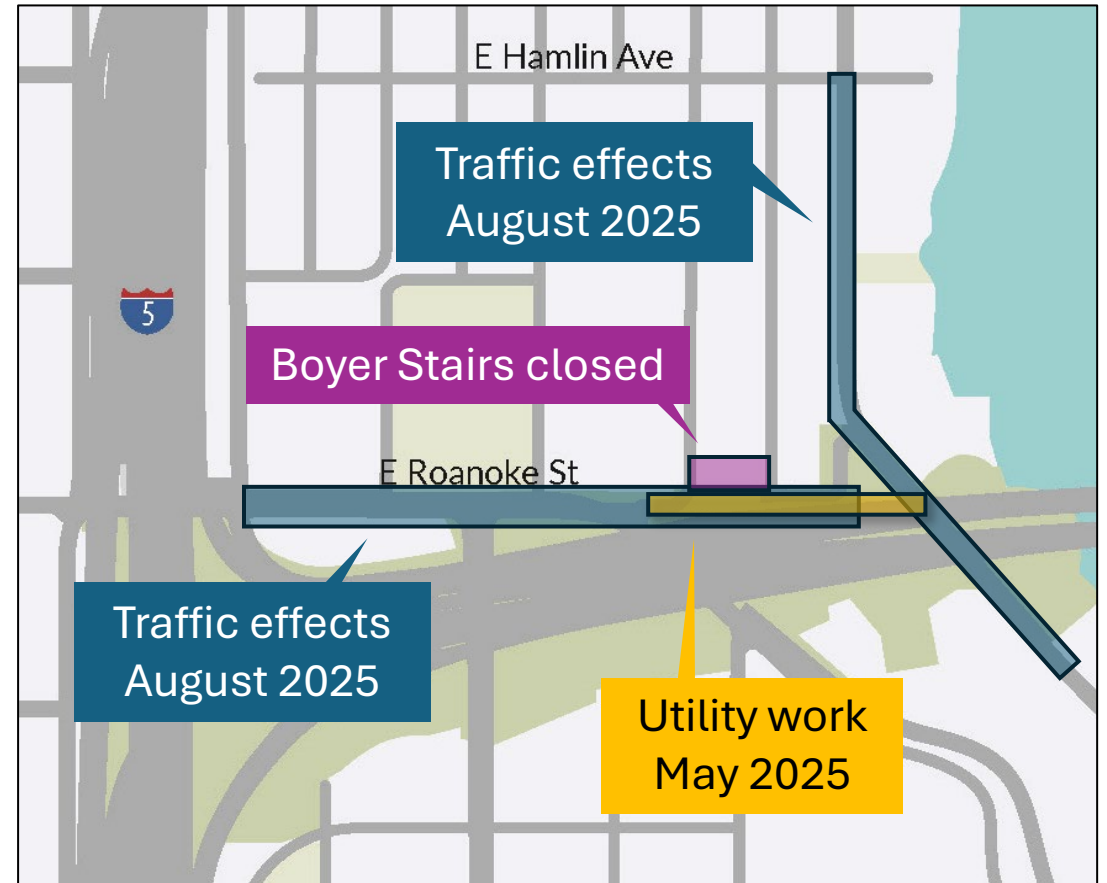


Map of future acoustic fence locations.

Long-term lookahead (2025)

Utility work near Roanoke Park

- Utility work on a waterline along East Roanoke Street is scheduled to begin in June 2025.
- Additional utility work on a 26 kilovolt electrical line is scheduled for August 2025.
- Expect single-lane closures and flagging when additional work begins in August.
- Reminder: the Boyer Stairs are scheduled to close in July 2025 **for up to five years**.



Map of the Roanoke Park and Portage Bay neighborhoods.

Boyer Stairs closure

- The Boyer Stairs will close as soon as July. We'll rebuild the stairs towards the end of the project.
- The new staircase will include improved handrails and pedestrian lighting.
- Skanska is currently developing a preliminary design for the new stairs.
- While the stairs are closed, people will need to use alternate routes in the neighborhood.

Curb and sidewalk improvements

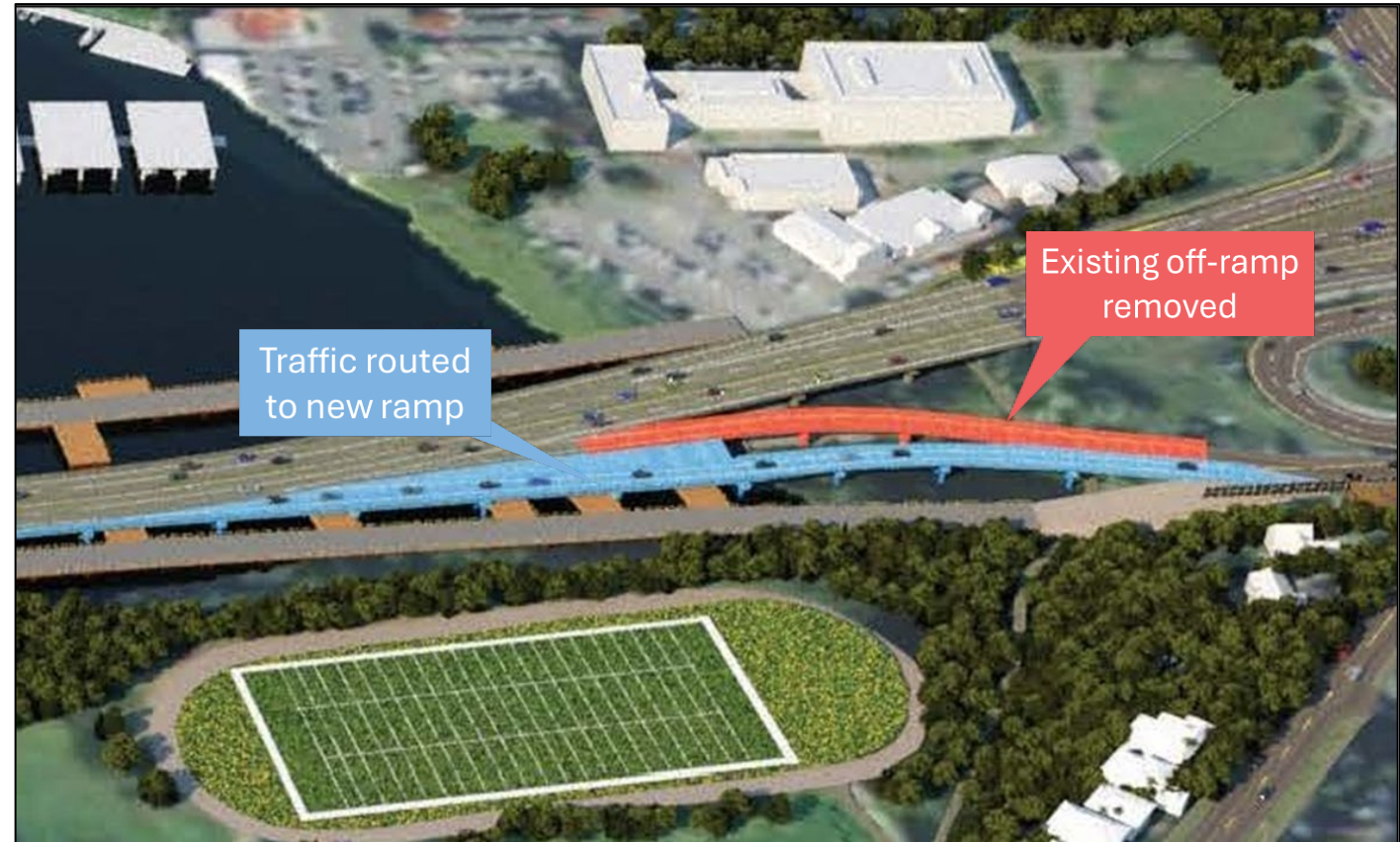
SDOT's recent curb and sidewalk improvements on Boyer Ave E, E Edgar St and 11th Ave E were made to provide an alternative route to the Boyer Stairs while the steps are removed and replaced.



Boyer Stairs conceptual design, subject to change

Upcoming traffic shifts this fall

- There will be a major traffic shift on the eastbound SR 520 off-ramp to Montlake Boulevard.
- This work will require at least two full weekend closures and several nighttime closures of eastbound SR 520 on the Portage Bay Bridge.



Future eastbound SR 520 off-ramp to Montlake Boulevard

Staying in touch and Q&A

How to stay informed



PORTAGE BAY CONSTRUCTION HOTLINE

24-hour phone line for construction related questions. This is a new hotline for the Portage Bay Project.

206-319-4520



CONSTRUCTION CORNER WEBSITE

One-stop shop for construction information during the Portage Bay Bridge and Roanoke Lid project.

sr520construction.com

Questions?
Email the project team at
sr520bridge@wsdot.wa.gov



EMAIL UPDATES

Receive regular email updates about upcoming construction work with our weekly newsletter. Subscribe here:

bit.ly/4hyohIT



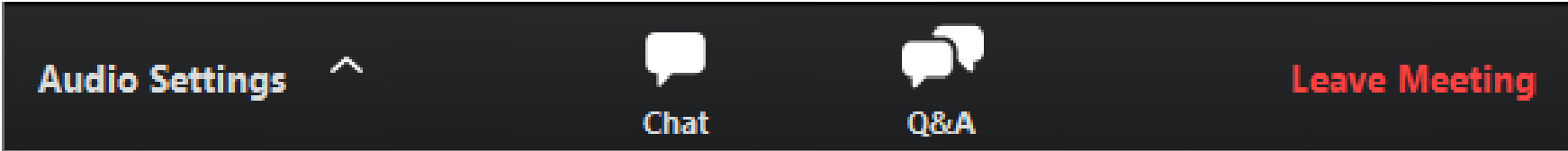
MEETINGS

Attend our open houses and monthly construction meetings. Sign up for email updates to receive invitations to the meetings.

Thank you!

Comments and questions

Please use the **Q&A window** to ask questions or offer comments.

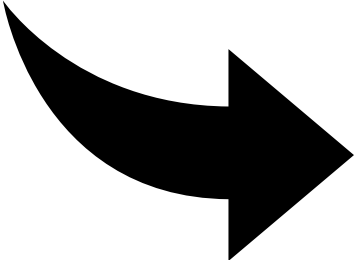


CHAT is disabled during the presentation. Please communicate with the team through the **Q&A window**.

Meeting recordings

Want to review this meeting again? Visit the Construction Corner to find meeting materials and recordings.

Remember to scroll down to the bottom of the page!



Washington State Department of Transportation

SR 520 Program News Good To Go!

STATE ROUTE 520

Construction Map Program Construction Projects Contact Us Outreach & Events

Portage Bay Bridge and Roanoke Lid Project

The Portage Bay Bridge and Roanoke Lid Project will replace the aging Portage Bay Bridge with a seismically resilient structure that includes improved bus/carpool travel and an extension of the SR 520 Trail. This project also builds a landscaped lid between Seattle's Roanoke Park and North Capitol Hill neighborhoods.

[Portage Bay Project Webpage](#)

Other

We strive to keep the public informed about our project construction activities and effects. We do this through regular public meetings, neighborhood FAQs, community events, and digital communications.

Public meetings

[View the Portage Bay Project's latest monthly construction meeting recording.](#)

[View the Portage Bay Project's latest monthly construction meeting presentation.](#)