

Welcome to the Gateway Executive Committee Meeting

We'll start soon.

While you're waiting...

- Make sure your audio is working. If your computer doesn't have a mic, you can call in on your phone.
- Find the chat box! If you want to write instead of talk, that's the way to do it.

Puget Sound Gateway Program

SR 167 and SR 509 Completion Projects

Executive Committee Meeting
June 9, 2025

JOHN WHITE, PE
ED BARRY, PE
ANDREY CHEPEL, PE
BRENDEN CLARKE, PE
AARON FIESER, PE
CARLA A. SEE

PROGRAM ADMINISTRATOR
TOLL DIVISION DIRECTOR
SR 509 COMPLETION PROJECT CONSTRUCTION MANAGER
ASSISTANT REGIONAL CONSTRUCTION ENGINEER
SR 167 COMPLETION PROJECT DESIGN MANAGER
WASHINGTON STATE TRANSPORTATION COMMISSION DEPUTY DIRECTOR

Agenda

- Objectives:
 - Recap 2025 legislative session direction
 - Provide program funding and progress update
 - Provide an update on WSTC rate-setting
 - Share SR 509 and SR 167 construction and design updates
 - Provide next steps

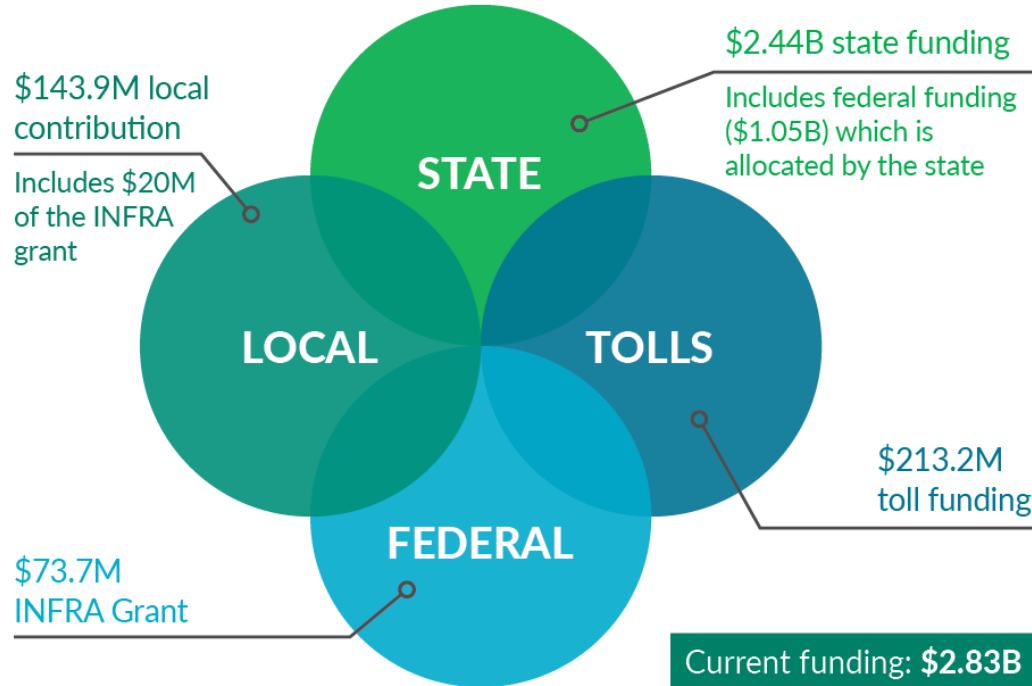
Legislative update

2025 Legislative direction

- **Puget Sound Gateway Program funding gap:** The legislature increased Gateway Program funding by \$155 million through an increase in toll funding (\$33.2M) and additional state funding.
- **System-wide low-income tolling program:** The legislature directed WSTC, in coordination with WSDOT, to develop a system-wide low-income tolling program with discounts for qualifying drivers, starting with new tolled facilities like the SR 509 and SR 167 Expressways in **2026**.
- **Washington State Transportation Commission Route Jurisdiction Study:** The legislature directed WSDOT to not execute a state highway route transfer under RCW 36.75.090 and 47.24.010 without approval from the receiving city or county from July 1, 2025, until June 30, 2026. The department may continue discussions with local jurisdictions regarding state highway route transfers to local jurisdictions that may occur after consideration of the final report and recommendations of the Washington State Route Jurisdiction Study expected by December 2025.

Program delivery and cost update

Puget Sound Gateway Program funding



Gateway Program contracts

D-B CONTRACTS	STAGE 1a	STAGE 1b	STAGE 2
SR 509	Open to traffic	Under construction	Under construction
SR 167	Open to traffic	Under construction	Stage 2a Under construction ----- Stage 2b Preparing for Phase 1 in July 2025

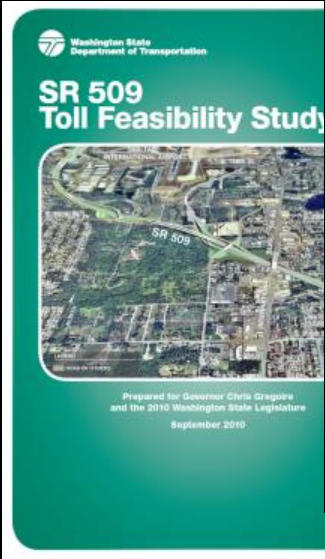
- **Clear Creek Fish Barrier Mitigation**

- Design-bid-build
- Anticipated project timeline: 2026-2028

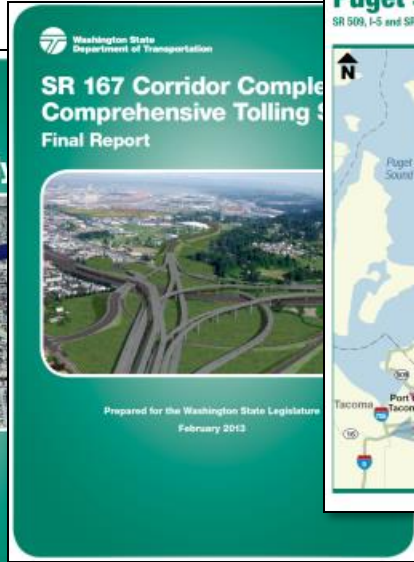


Toll funding

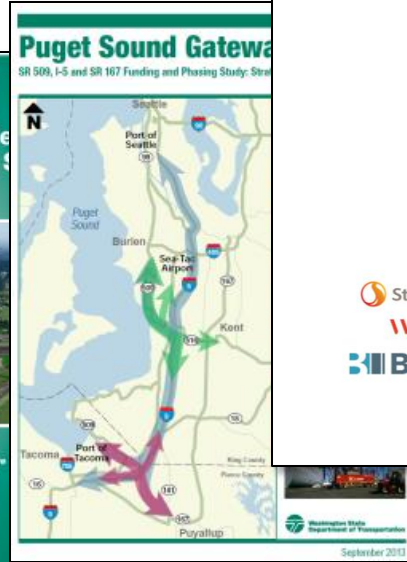
Tolling



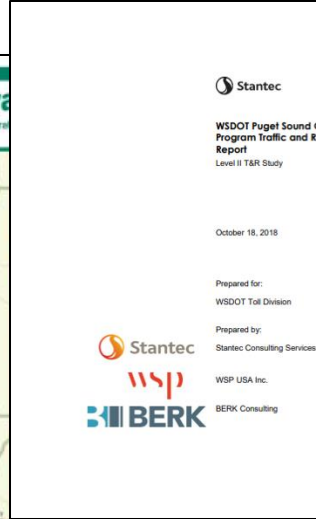
2010



2013



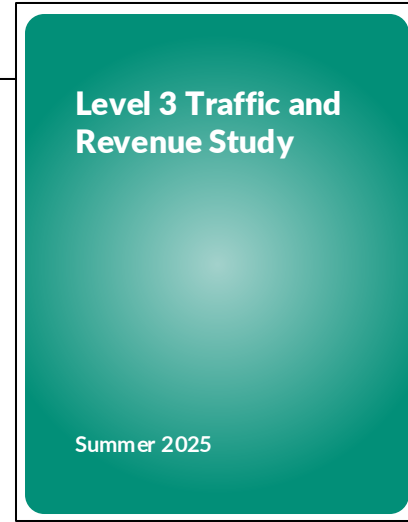
2013



2018



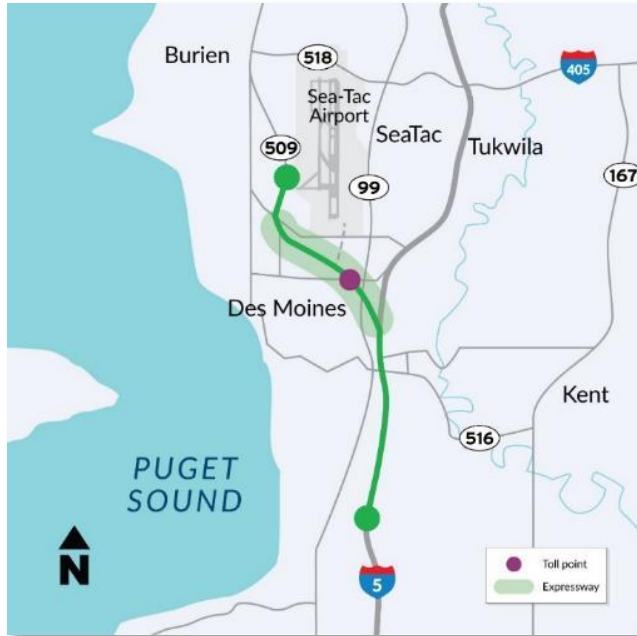
2023



2025

Gateway Program expressway toll points

SR 509



SR 509, I-5 to 24th Avenue South – October 2025
SR 509, 24th Avenue South to South 188th Street – fall 2028

SR 167



SR 167, I-5 to SR 509 New Expressway – December 2026
SR 167, I-5 to SR 161 New Expressway – fall 2029



Puget Sound Gateway Program

Transportation Commission Rate-Setting Overview

Carl See

Deputy Director

Washington State Transportation
Commission

Toll Rate and Policy Options Considered

Scenarios	Toll Rates	Toll Escalation	Truck Tolls	Low Income Discount
A	SR 509 & SR 167 – East of I-5: <ul style="list-style-type: none"> \$1.20 to \$2.40 (SR 509) \$1.20 to \$3.00 (SR 167) Vary by time of day & direction SR 167 – West of I-5: <ul style="list-style-type: none"> \$1 at all times of the day 	2.15% escalation every year, starting in Fiscal Year 2031	Vehicles with 3+ axles pay a multiple of the base toll	Potential consideration of future system-wide low-income program
B			All vehicles pay the same toll	
C			Vehicles with 3+ axles pay a multiple of the base toll	50% discount for SR 509 area residents at 0-200% of Federal Poverty Level
D			All vehicles pay the same toll	

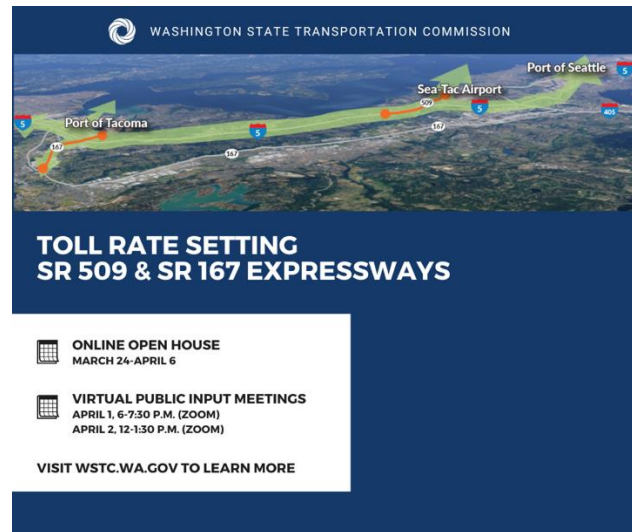
Assumes system-wide tolling exemptions will apply to the Expressways, including for transit and emergency vehicles.

The Office of the State Treasurer determined that all four toll rate options meet financial sufficiency requirements.

WSTC Public Engagement

The WSTC provided the following opportunities for the public to learn about the tolling options under consideration and to provide comments ahead of the Commission issuing its proposal:

- **Online Open House:** March 24 – April 6
- **Public Input Meetings (*virtual*):** April 1 & 2
 - Tuesday, April 1, 6pm – 7:30pm
 - Wednesday, April 2, 12pm – 1:30pm
- **Email**



The graphic features a map of the Puget Sound region with green lines indicating the SR 509 and SR 167 expressways. Key locations marked include Port of Tacoma, Sea-Tac Airport, and Port of Seattle. The graphic is titled 'TOLL RATE SETTING SR 509 & SR 167 EXPRESSWAYS' and lists the following events:

- ONLINE OPEN HOUSE**
MARCH 24-APRIL 6
- VIRTUAL PUBLIC INPUT MEETINGS**
APRIL 1, 6-7:30 P.M. (ZOOM)
APRIL 2, 12-1:30 P.M. (ZOOM)

A link is provided: VISIT [WSTC.WA.GOV](https://wstc.wa.gov) TO LEARN MORE

Online Open House

From March 24 – April 6, the WSTC hosted an Online Open House for the purpose of:

- Sharing information on the policy changes under consideration; and
- Offering the public an opportunity to provide comments on them.

Over 1,600 comments were provided from **over 430 individuals**, with about 300-400 comments apiece on toll rates, policy options, and general feedback. General themes included:

- General opposition to the use of tolls.
- Sentiment that proposed toll rates are too high.
- About twice as much support than opposition for higher tolls on vehicles with 3+ axles.
- More support for a low-income discount program than opposition.
- Requests for additional discounts such as for seniors or local residents.

Public Meetings & Email Input

WSTC held two virtual public meetings (April 1 & 2):

- **86** people attended with public input that included:
 - **40 Questions:** Themes included the potential low-income toll discount program, proposed toll rates and funding, traffic impacts and project-related decisions.
 - **4 Comments:** Topics included input on projects decisions, impacts of tolls on commuters, and concerns about the truck toll multiplier.

About 200 emails received via WSTC website and public inbox

- Majority of input generally opposed the use of tolling on the Expressways.

Engagement with Regional Partners

- Participate in the Puget Sound Gateway Program's Executive and Steering Committees providing periodic updates on the toll rate considerations and process.
- Briefings held with local jurisdictions and legislators.
- Input from regional partners included:
 - Mayor Victoria Woodards, City of Tacoma
 - The Northwest Seaport Alliance
 - Joe Vinson, City Councilmember, City of SeaTac

WSTC's Proposed Toll Rate and Policy Options

- The WSTC selected **Toll Rate Scenario A** in April 2025 as it's official proposal for further public review and comment.
- Directed preparations commence for offering a system-wide low-income program beginning with the Puget Sound Gateway Expressways in 2026.

Scenario	Toll Rates	Toll Escalation	Truck Tolls	Low Income Discount
A	SR 509 & SR 167 – East of I-5: <ul style="list-style-type: none"> • \$1.20 to \$2.40 (SR 509) • \$1.20 to \$3.00 (SR 167) • Vary by time of day & direction SR 167 – West of I-5: <ul style="list-style-type: none"> • \$1 at all times of the day 	2.15% escalation every year, starting in Fiscal Year 2031	Vehicles with 3+ axles pay a multiple of the base toll	System-wide low-income program with discounted toll rates for SR 509 & SR 167 Expressways by December 2026

Assumes system-wide tolling exemptions will apply to the Expressways, including for transit and emergency vehicles.

Next Steps in the Toll Setting Process

- Public comment on the proposed toll rates and policies will be collected through June 10.
- A final public hearing will be held on June 17 at the WSTC's virtual meeting when they are expected to adopt the final toll rates and policies.
- Toll rates and policies for the Puget Sound Gateway Expressways will take effect in Fall 2025.

Thank You!

Contact:

Carl See

WSTC Deputy Director

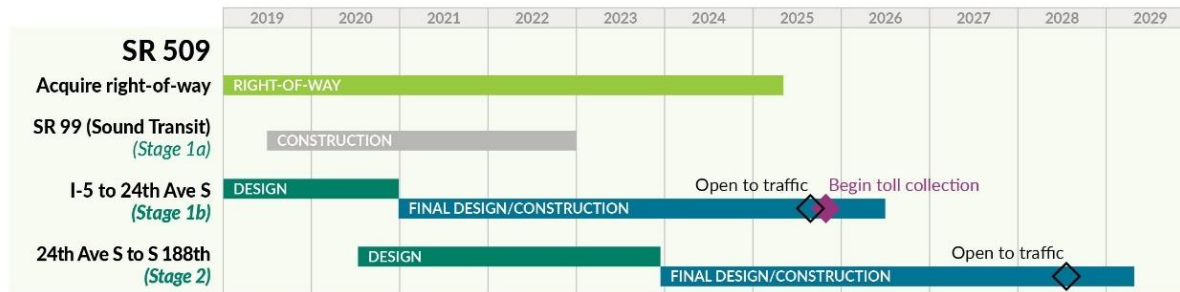
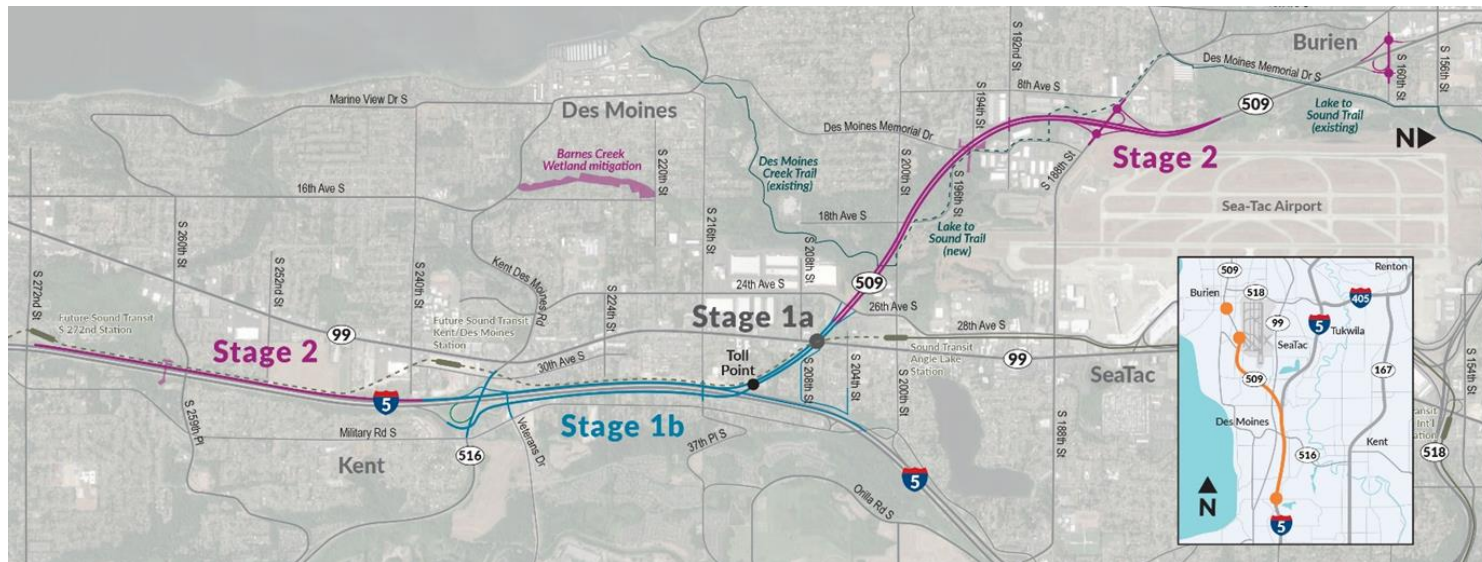
transc@wstc.wa.gov

360-705-7070



SR 509 Completion Project update

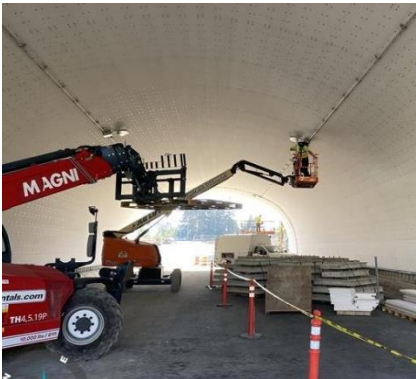
SR 509 construction stages



SR 509 Completion Project – Stage 1b

I-5/SR 516 Interchange and Veterans Drive Tunnel

- Crews made major progress on the Veterans Drive tunnel including fireproofing, tying in an underground waterline, and installing electrical utilities. Construction is expected to wrap up this July.
- The new eastbound SR 516 loop ramp to northbound I-5 is scheduled to open this week after a four-month closure.



Crews install fireproofing panels and a waterline under the Veterans Drive tunnel.



Crews placing concrete barrier for the new eastbound SR 516 to northbound I-5 ramp.



SR 509 Completion Project – Stage 1b

I-5 to 24th Avenue South – New expressway



SR 509 looking north



I-5 looking south

Toll marketing update

Why we need marketing & education

Raise awareness of tolling

- No surprises about where, when, and how we toll.
- Explain why tolling is necessary – Revenue? Traffic management? Both?
- Avoid confusion, which leads to frustration, upset customers and backlash.

Increase usage of toll road

- Especially important for roads where revenue is needed to pay off debt.
- Incentive program!
 - Higher *Good To Go!* pass usage means more efficient toll payment/collection

Reach our audiences

- Travel shed is diverse; different audiences with different goals.
- We can tailor what we're saying based on whom we're trying to reach
 - Reach audiences via their preferred choice of media (social media, digital, radio, etc.)



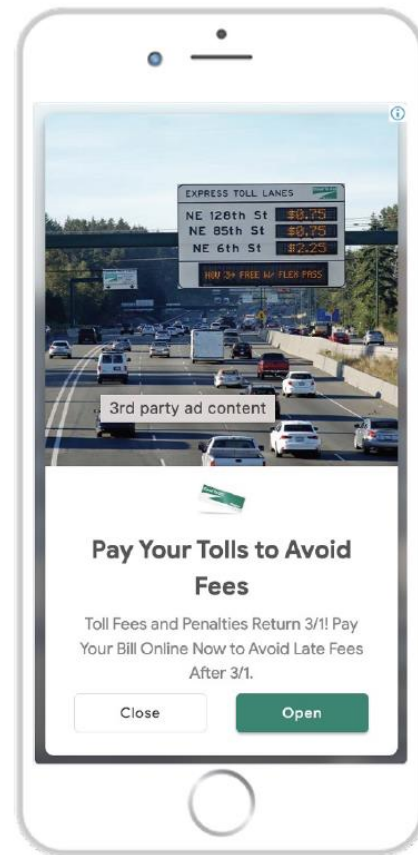
How we market & educate

Paid media

- TV, radio, print, digital, out-of-home
- Project website – GoodToGo509.com
- Translated content

Earned media/other efforts

- News releases, blogs, press conferences centered around key milestones
- Fairs/festival outreach at various events in travel shed
- Direct outreach to community groups, *Good To Go!* customers



SR 509 expressway campaign – 4 phases



Phase 1 - Road opens soon (June)

- Opens soon (provide date when ready)
- Try it free this summer!

Phase 2 - Road now open (July-August)

- Free all summer.
- Here's how it works
- Get your free pass

Phase 3 - Tolling starts soon (September)

- Tolling starts soon (provide date when ready)
- Here are the toll rates
- Make sure you're *Good To Go!*

Phase 4 - Tolling is here (September-October)

- Drivers will now pay a toll for using the road
- Not too late for *Good To Go!*

Creative – GoodToGo509.com

English | [Español](#) | [Tiếng Việt](#) | [简体中文](#) | [繁體中文](#) | [Af Soomaali](#) | [اڤ سوماالي](#) | [አማርኛ](#) | [ភាសាខ្មែរ](#)

The new SR 509 Expressway opens soon!

Try it free through summer.

Save \$2 on each toll in Washington with a *Good To Go!* pass

Get *Good To Go!*

An alternate route

The first mile of the new SR 509 **tolled** expressway runs between I-5 and 24th Avenue South in south King County. The last two miles (extending to South 188th Street) will open in 2028.

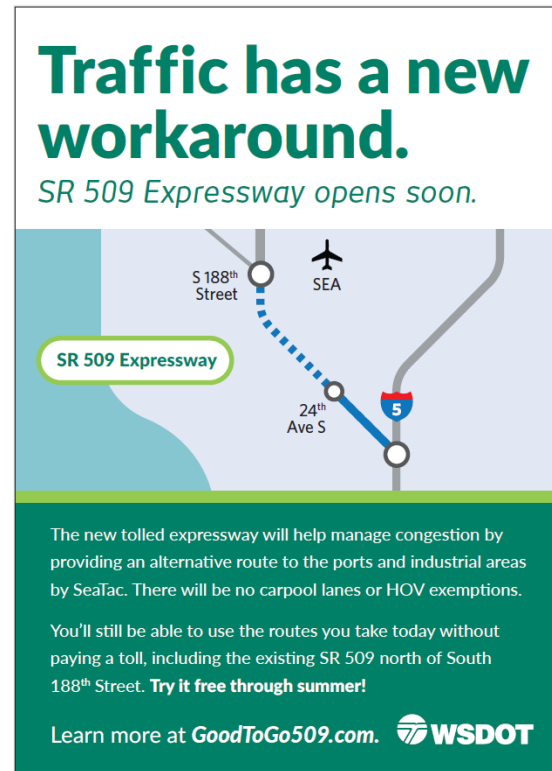
Creative - ads



Phase 1 Spanish YouTube banner ad



Phase 1/2 transit ad



Phase 1 print ad

SR 509 construction update continues

SR 509 Completion Project – Stage 2

24th Ave South to South 188th Street – New Expressway

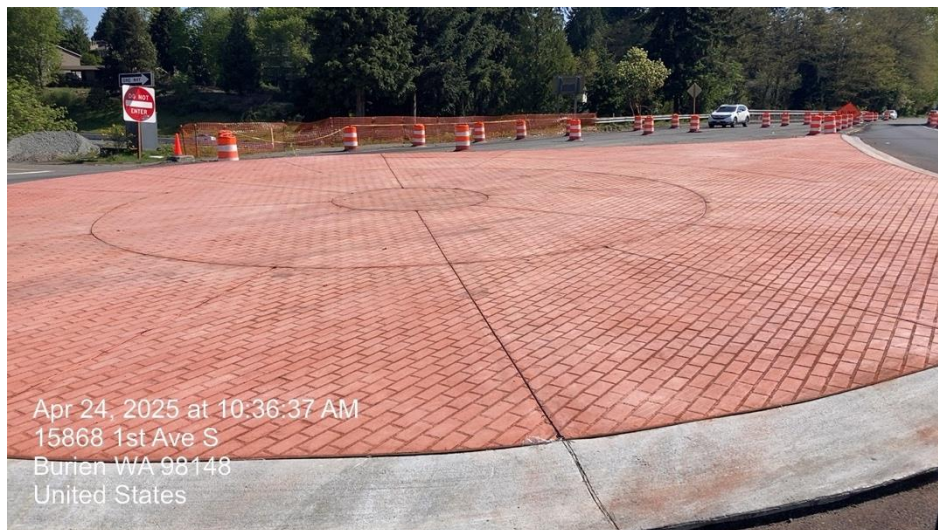
- The remaining two miles of new expressway between 24th Avenue South and South 188th Street are under construction.
- This summer, crews will build a new bridge over Des Moines Memorial Drive South.
- During Stage 2 project construction, the bridge will provide work zone access to crews, minimizing travel impacts on DMMD.
- Once the work is complete, the bridge will become part of the SR 509 Expressway.



SR 509 Completion Project – Stage 2

South 160th Street/SR 509 interchange

- The roundabouts at the South 160th Street/SR 509 interchange are taking shape.
- Interchange construction is expected to last through summer 2026.
- Noise wall construction is also progressing and is expected to be completed by the end of summer.

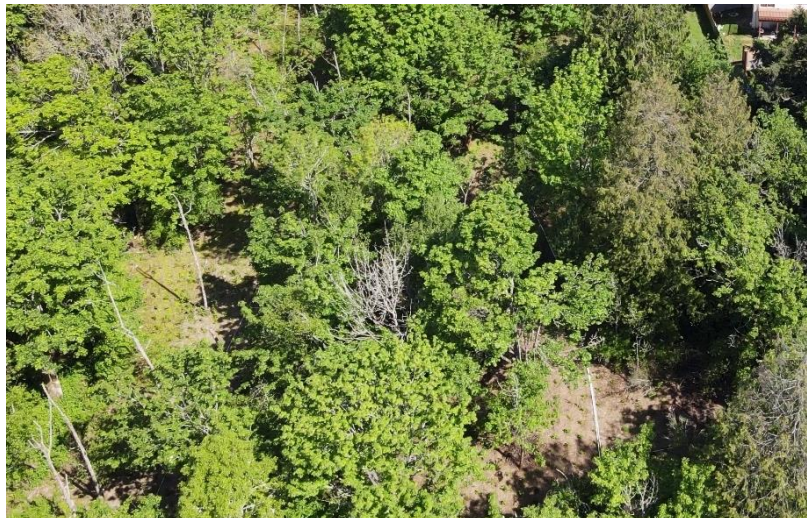


This spring, crews paved the roundabout at the South 160th Street/SR 509 interchange.

SR 509 Completion Project – Stage 2

Wetland restoration at Barnes Creek

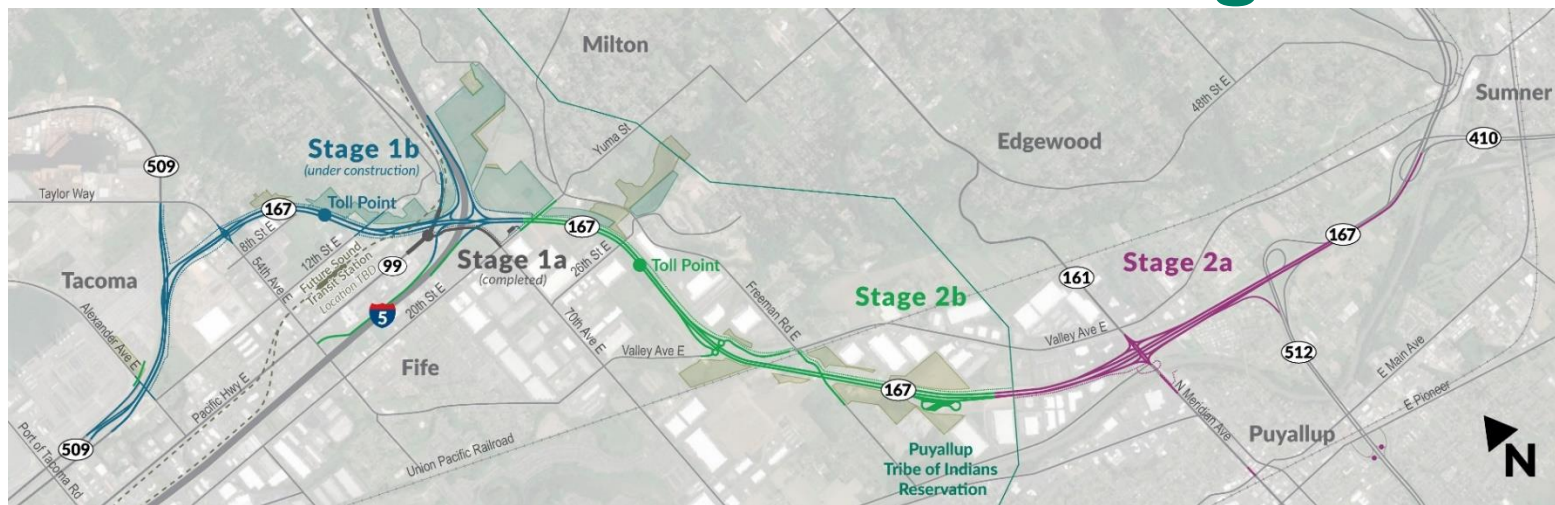
- Wetland restoration at Barnes Creek is complete.
- As part of the wetland preservation work, crews removed invasive plant species and replaced them with native plants on over 11 acres.



Completed wetland restoration of Barnes Creek

SR 167 Completion Project update

SR 167 construction stages



SR 167



SR 167 Completion Project – Stage 1b

Construction milestones

SR 167 / SR 509 overpass bridge



May 2025

Winter 2025

- Girders set on first half of SR 167 / 509 overpass bridge.
- Northbound SR 509 traffic shifted under new bridge.

Summer 2025

- Completion of second half of bridge.

Winter 2026

- Completion of all new structures.

SR 167 Completion Project – Stage 1b

Construction milestones

Alexander Avenue East intersection improvements



Existing condition – May 2025



Future intersection rendering - 2026

SR 167 Completion Project – Stage 1b

Construction milestones

54th Avenue roundabout interchange



May 2025

Winter 2024/5

- 54th Avenue traffic shift and start of roundabout construction.

Spring 2025:

- Center island and sidewalk completed.

Summer 2025:

- 54th Avenue roundabout completion and opening to traffic.

SR 167 Completion Project – Stage 1b

Construction milestones

SR 167 / I-5 overpass bridge and diverging diamond interchange construction



May 2025, SR 167 expressway alignment

Fall 2024

- Set the second longest pre-cast concrete bridge girders in the world over I-5.
- Demolished 70th Avenue bridge.

Winter - Spring 2025

- Built embankment and foundation for new ramps.
- Poured bridge deck.

Summer 2025

- Girder settings for new expressway ramps over Wapato Way East and SR 99.

Fall 2025

- Final paving of mainline between 54th Avenue and SR 99.

SR 167 Completion Project – Stage 1b

Construction milestones

Riparian restoration program progress



May 2025, Upper Hylebos Creek



Hylebos RRP construction continues at:

- Lower Hylebos site
- Upper Hylebos site
- Two sites in Middle Surprise Lake Tributary.

SR 167 Completion Project - Stage 2a

Construction milestones

Ongoing and anticipated work:

- Tree clearing and shrub removal
- Begin grading for new expressway embankment west of North Meridian Avenue
- Shift traffic on North Meridian Avenue for diverging diamond interchange and mainline bridge construction (Late summer)

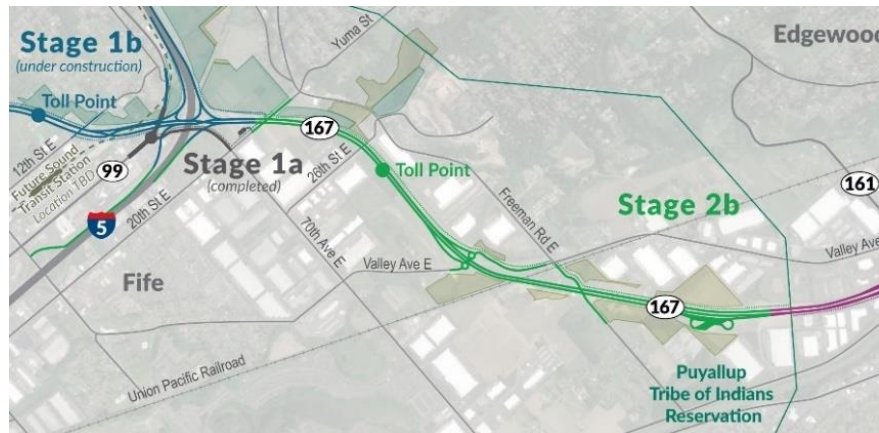


May 2025

Project update – SR 167 Stage 2b

I-5 to SR 161 – New Expressway

- **Highest Scoring Proposer identified**
 - Kraemer-Scarsella Joint Venture
 - Progressive design-build experience
- **Phase 1 – Design validation**
July 2025 – January 2026
WSDOT commits initial funds for design validation, risk management, project cost/negotiations, and any approved early work packages.
- **Phase 2 – Final design and construction**
January 2026 – fall 2029
Following a successful contract price negotiation with the design-builder, WSDOT will authorize funds for project final design and construction.



Statewide construction update

Difficult summer travel ahead

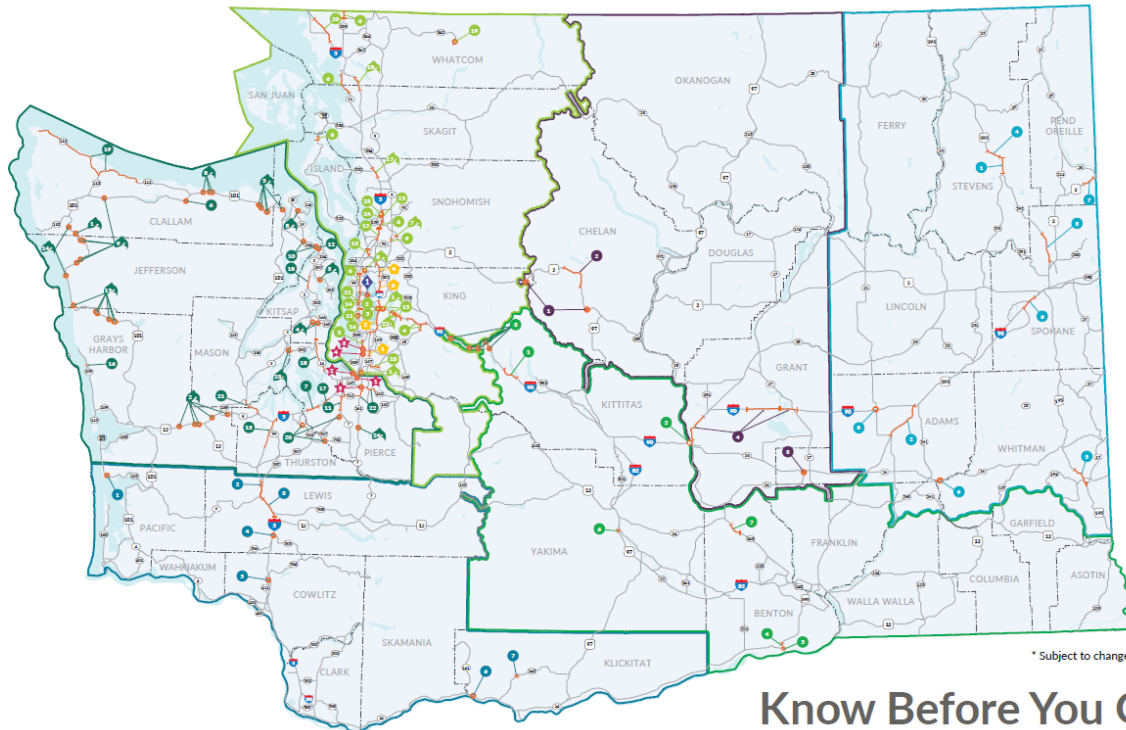
The next several summers will bring a LOT of statewide construction, including multiple projects in nearby locations

- **It will be disruptive**
- We're working hard to lessen impacts where we can, but **travel will be challenging**
- We need everyone to:
 - **Be aware**
 - **Plan ahead**
 - Be prepared for **added congestion** and **longer travel times**



A statewide construction zone

2025 Statewide Construction Map*



Know Before You Go!

High visibility projects in the Seattle area

Revive I-5 - Ship Canal Bridge

- **June 20 – 23:** Northbound I-5 reduced to two lanes to prepare for the four-week lane reduction in July-August.
- **July 18 – 21:** Full northbound I-5 closure from I-90 to Northeast 45th Street to set up the work zone for the four-week lane reduction.
- **July 21 – Aug. 15:** Northbound I-5 reduced to two lanes across the Ship Canal Bridge.
- **Aug. 15 – 18:** Full northbound I-5 closure from I-90 to Northeast 45th Street to pick up the work zone.
- **Fall 2025:** Several southbound I-5 weekend-long lane reductions, date to be scheduled.

North/South Strategic Pavement Preservation 23-25

- Repair dozens of highways throughout the region, including pavement repairs on I-5 northbound, southbound and the Express Lanes between Denny Way and Northgate.

SR 99 Tunnel Texturing

- Retexture the road surface of both directions of the tunnel to create a higher friction surface.

I-90 Paving and Expansion Joint Repair, Mercer Island to Bellevue & Issaquah

- Several projects that repair pavement and bridges on I-90.

I-405/SR 167 Corridor Program Projects

- Several projects along I-405 and SR 167 to improve and expand the managed lanes system and support Sound Transit's Stride BRT Program.

Our outreach goal is awareness

Given the number of projects and locations travel will be rough on residents and visitors this summer.

We know delays and closures are frustrating – we drive these roads too.

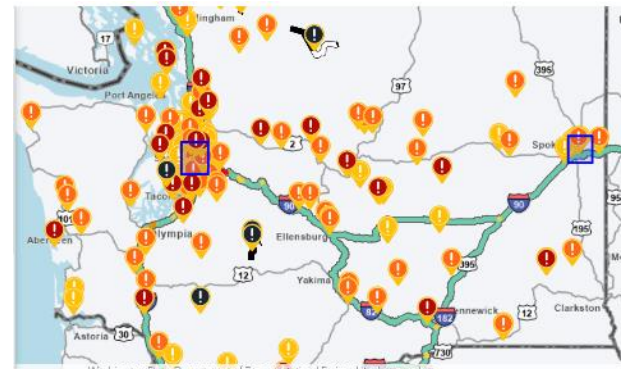
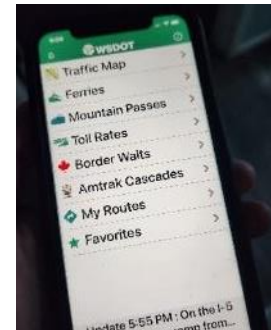
Our goal is to ensure everyone is **aware** of what is coming so they can **make the best travel decisions** for themselves and their situation.



Tools to “know before you go”

This summer more than ever you'll want to “know before you go”

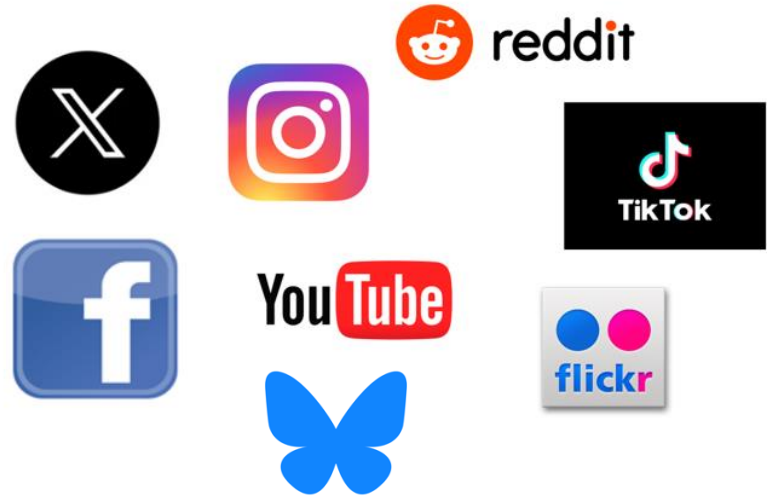
- Real time travel map:
<https://wsdot.com/Travel/Real-time/Map/>
- WSDOT App: available for iPhone and Android – search for “WSDOT”
- [News releases](#), project pages, the [WSDOT blog](#)
- Sign up for WSDOT [email Freight Alerts](#)
- Snoqualmie Pass delays text alerts: *text "Start" to the number 85107*



Stay updated on social media

Multiple social media platforms, including:

- WSDOT BlueSky and X/Twitter accounts
 - Statewide
 - Area specific
 - Snoqualmie Pass account
 - Project specific
- WSDOT statewide Facebook page:
www.facebook.com/WSDOT
- Washington State Ferries specific Facebook and Twitter accounts
 - www.facebook.com/wsferries
 - twitter.com/wsferries



Next steps

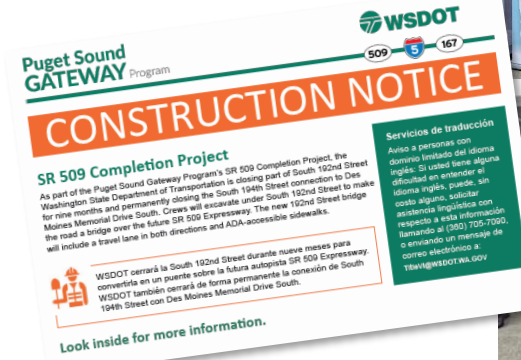
Community engagement

2025 outreach planned:

- Community tabling and outreach

June 13-14	Burien Strawberry Festival	Burien
June 13-14	Puyallup Meeker Days	Puyallup
June 21-22	Sumner Rhubarb Days	Sumner
July 11-12	Kent Cornucopia Days	Kent
July 19	Edgewood Summerfest	Edgewood
July 19	Des Moines Farmers Market	Des Moines
July 30	SeaTac Night Market	SeaTac
Aug. 16	Milton Days	Milton
Sept. 23	B-Town Fiesta	Burien
Oct. 4	Fife Harvest Festival	Fife

- Roundabout and diverging diamond interchange interactive learning activities and community feedback for education outreach in 2026.
- SR 167 Stage 2a construction online open house: June 9.
- Ongoing construction notifications and inquiry response.
- Tolling information and readiness outreach in 509 corridor.



Next steps

- Ongoing coordination with WSTC for toll rate-setting
 - WSTC final public hearing – June 17
- Open the first mile of expressway on SR 509 – late June
- Partner council briefings – June and July
- Continue construction on four contracts
- Begin working with contractor on SR 167 Stage 2b – Phase 1

More information:

John White, PE

Puget Sound Gateway Program Administrator

(206) 805-2966

John.White@wsdot.wa.gov

Steve Fuchs, PE

SR 167 Project Manager

(360) 701-9413

Steve.Fuchs@wsdot.wa.gov

Andrey Chepel, PE

SR 509 Construction Engineering Manager

(206) 709-6970

Andrey.Chepel@wsdot.wa.gov